

PSAP antibody

Catalog Number: 114289

Product name

PSAP antibody

IHC: 1:20-1:200

IF: 1:50-1:500

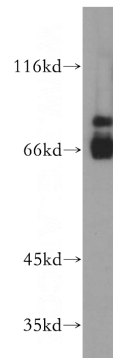
Specificity

Human, Mouse; other species not tested.

Validations

Antibody description

PSAP Rabbit Polyclonal antibody. Positive IHC detected in human liver cancer tissue. Positive IF detected in HepG2 cells. Positive WB detected in mouse liver tissue, HepG2 cells, human liver tissue. Observed molecular weight by Western-blot: 65 kDa, 70 kDa



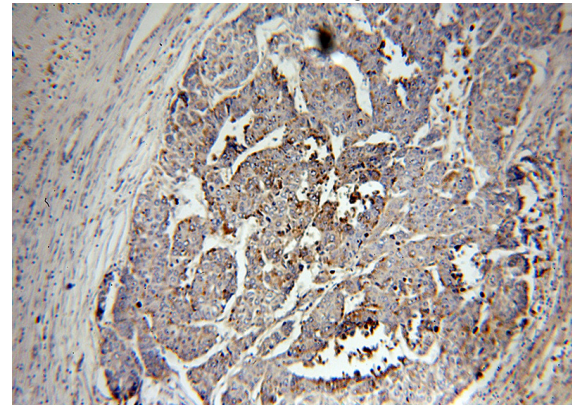
Preparation

This antibody was obtained by immunization of PSAP recombinant protein (Accession Number: NM_002778). Purification method: Antigen affinity purified.

mouse liver tissue were subjected to SDS PAGE followed by western blot with Catalog No:114289(PSAP antibody) at dilution of 1:500

Formulation

PBS with 0.02% sodium azide and 50% glycerol pH 7.3.



Storage

Store at -20°C. DO NOT ALIQUOT

Clonality

Polyclonal

Immunohistochemical of paraffin-embedded human liver cancer using Catalog No:114289(PSAP antibody) at dilution of 1:100 (under 10x lens)

Ig Type

Rabbit IgG

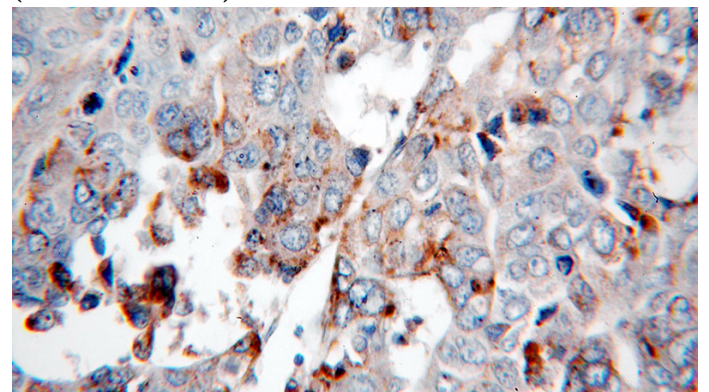
Applications

ELISA, WB, IHC, IF

Dilutions

Recommended Dilution:

WB: 1:500-1:5000

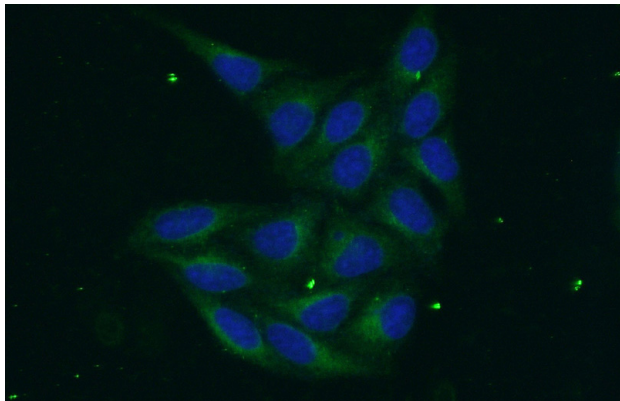


Immunohistochemical of paraffin-embedded

PSAP antibody

Catalog Number: 114289

human liver cancer using Catalog
No:114289(PSAP antibody) at dilution of 1:100
(under 40x lens)



Immunofluorescent analysis of (-20oc Ethanol)
fixed HepG2 cells using Catalog No:114289(PSAP
Antibody) at dilution of 1:50 and Alexa Fluor 488-
conjugated AffiniPure Goat Anti-Rabbit IgG(H+L)