

PRX3 antibody

Catalog Number: 114285

Product name

PRX3 antibody

IHC: 1:20-1:200

IF: 1:10-1:100

Specificity

Human, Mouse, Rat; other species not tested.

Antibody description

PRX3 Rabbit Polyclonal antibody. Positive IF detected in HepG2 cells. Positive IHC detected in human lung cancer tissue, human liver cancer tissue. Positive WB detected in HeLa cells. Observed molecular weight by Western-blot: 28 kDa

Preparation

This antibody was obtained by immunization of PRX3 recombinant protein (Accession Number: NM_006793). Purification method: Antigen affinity purified.

Formulation

PBS with 0.1% sodium azide and 50% glycerol pH 7.3.

Storage

Store at -20°C. DO NOT ALIQUOT

Clonality

Polyclonal

Ig Type

Rabbit IgG

Applications

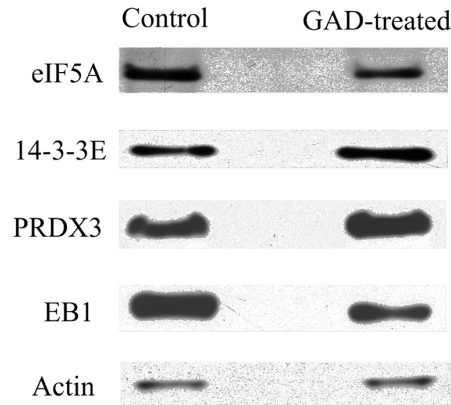
ELISA, WB, IHC, IF

Dilutions

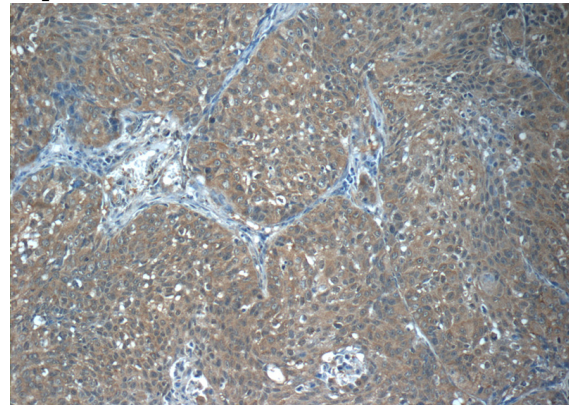
Recommended Dilution:

WB: 1:200-1:2000

Validations



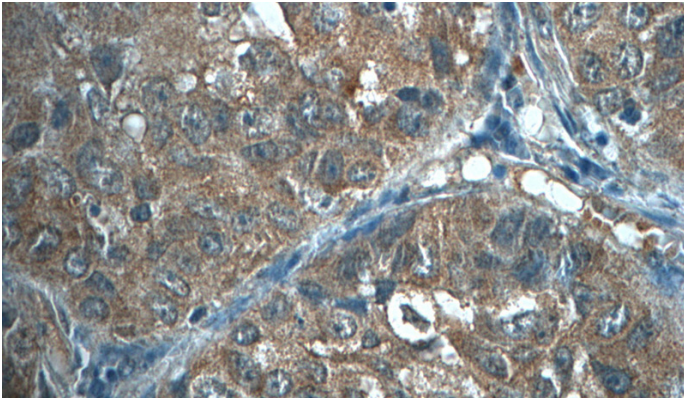
WB result from Qing-Xi Yue, (PMID:20449493); "Control" and "GAD-treated" above the panel represent the control cells and HeLa cells treated with 10 μ M GAD for 48 h, respectively. Each blot is the representative result of three independent experiments.



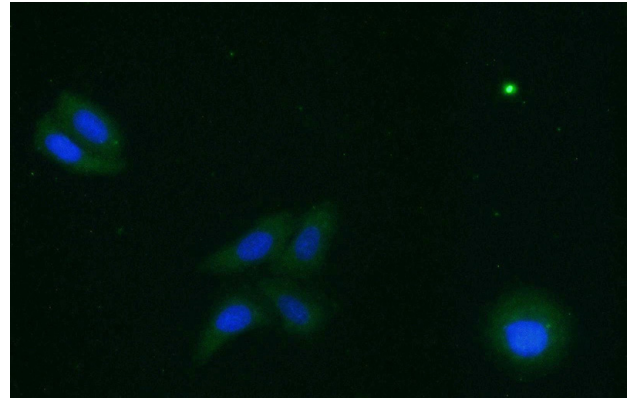
Immunohistochemistry of paraffin-embedded human lung cancer tissue slide using Catalog No:114285 (PRX3 Antibody) at dilution of 1:50 (under 10x lens)

PRX3 antibody

Catalog Number: 114285



Immunohistochemistry of paraffin-embedded human lung cancer tissue slide using Catalog No:114285 (PRX3 Antibody) at dilution of 1:50 (under 40x lens)



Immunofluorescent analysis of HepG2 cells using Catalog No:114285 (PRX3 Antibody) at dilution of 1:25 and Alexa Fluor 488-conjugated AffiniPure Goat Anti-Rabbit IgG (H+L)