

PRUNE2 antibody

Catalog Number: 114284

Product name

PRUNE2 antibody

Specificity

Human, Mouse, Rat; other species not tested.

Antibody description

PRUNE2 Rabbit Polyclonal antibody. Positive WB detected in human placenta tissue, mouse brain tissue, mouse testis tissue, rat brain tissue, SH-SY5Y cells, Transfected HEK-293 cells. Positive IHC detected in human kidney tissue, human brain tissue, human prostate cancer tissue. Observed molecular weight by Western-blot: 140~150 kDa

Preparation

This antibody was obtained by immunization of PRUNE2 recombinant protein (Accession Number: BC019095). Purification method: Antigen affinity purified.

Formulation

PBS with 0.1% sodium azide and 50% glycerol pH 7.3.

Storage

Store at -20°C. DO NOT ALIQUOT

Clonality

Polyclonal

Ig Type

Rabbit IgG

Applications

ELISA, IHC, WB

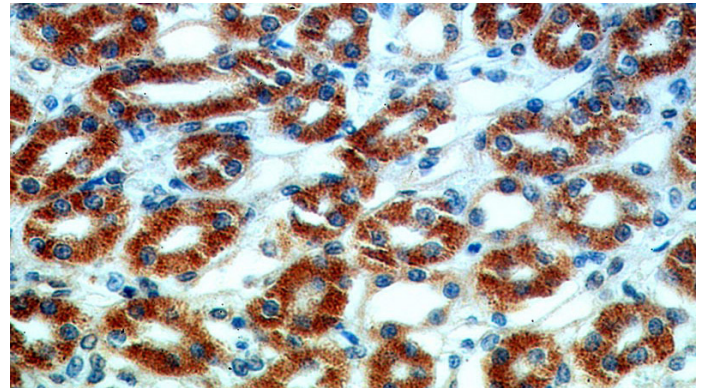
Dilutions

Recommended Dilution:

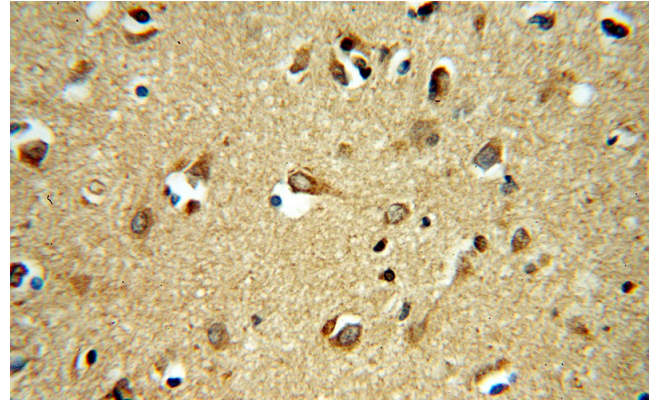
WB: 1:200-1:2000

IHC: 1:20-1:200

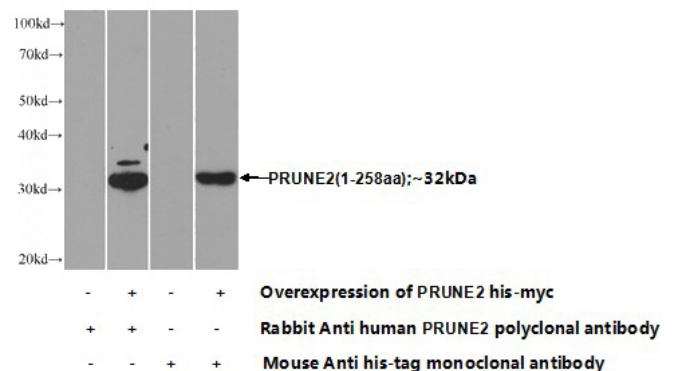
Validations



Immunohistochemical of paraffin-embedded human kidney using Catalog No:114284(PRUNE2 antibody) at dilution of 1:50 (under 40x lens)



Immunohistochemical of paraffin-embedded human brain using Catalog No:114284(PRUNE2 antibody) at dilution of 1:50 (under 40x lens)



PRUNE2 antibody



Catalog Number: 114284

Transfected HEK-293 cells were subjected to SDS PAGE followed by western blot with Catalog No:114284(PRUNE2 Antibody) at dilution of

human placenta tissue were subjected to SDS PAGE followed by western blot with Catalog No:114284(PRUNE2 Antibody) at dilution of 1:500

