

PRUNE antibody



Catalog Number: 114283

Product name

PRUNE antibody

IP: 1:200-1:2000

IHC: 1:20-1:200

Specificity

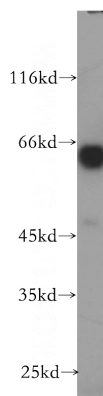
Human, Mouse, Rat; other species not tested.

IF: 1:10-1:100

Validations

Antibody description

PRUNE Rabbit Polyclonal antibody. Positive IHC detected in human liver cancer tissue. Positive IF detected in HepG2 cells. Positive IP detected in HepG2 cells. Positive WB detected in HepG2 cells, A431 cells, MCF7 cells. Observed molecular weight by Western-blot: 60kd



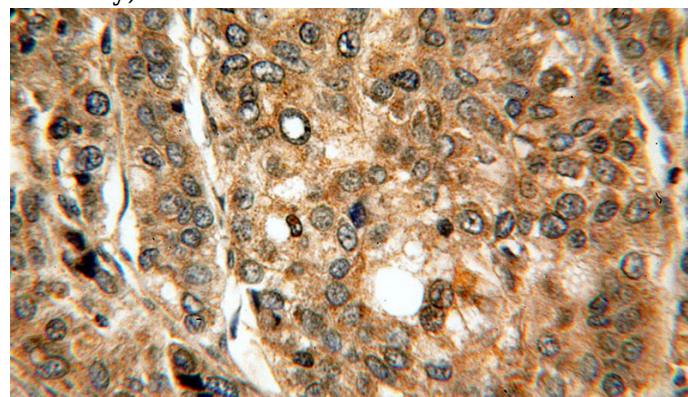
Preparation

This antibody was obtained by immunization of PRUNE recombinant protein (Accession Number: NM_021222). Purification method: Antigen affinity purified.

HepG2 cells were subjected to SDS PAGE followed by western blot with Catalog No:114283(PRUNE antibody) at dilution of 1:600

Formulation

PBS with 0.02% sodium azide and 50% glycerol pH 7.3.



Storage

Store at -20°C. DO NOT ALIQUOT

Clonality

Polyclonal

Ig Type

Rabbit IgG

Applications

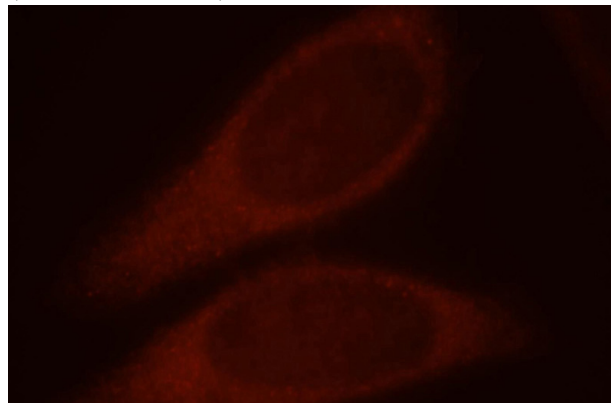
ELISA, WB, IHC, IF, IP

Dilutions

Recommended Dilution:

WB: 1:1000-1:10000

Immunohistochemical of paraffin-embedded human liver cancer using Catalog No:114283(PRUNE antibody) at dilution of 1:100 (under 40x lens)

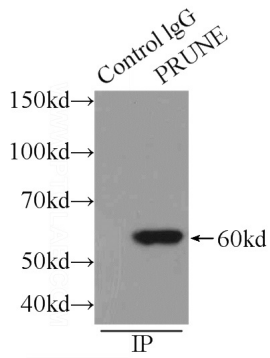


PRUNE antibody

Catalog Number: 114283

Immunofluorescent analysis of HepG2 cells, using PRUNE antibody Catalog No:114283 at 1:25 dilution and Rhodamine-labeled goat anti-rabbit

IP Result of anti-PRUNE (IP:Catalog No:114283, 3ug; Detection:Catalog No:114283 1:500) with HepG2 cells lysate 1720ug.



IgG (red).