

# PRSS2 antibody

Catalog Number: 114280

---

**Product name**

PRSS2 antibody

**Specificity**

Human,Mouse,Rat; other species not tested.

**Antibody description**

PRSS2 Rabbit Polyclonal antibody. Positive WB detected in Raji cells, HepG2 cells, mouse thymus tissue. Observed molecular weight by Western-blot: 26kd,35kd

**Preparation**

This antibody was obtained by immunization of PRSS2 recombinant protein (Accession Number: BC030260). Purification method: Antigen affinity purified.

**Formulation**

PBS with 0.02% sodium azide and 50% glycerol pH 7.3.

**Storage**

Store at -20°C. DO NOT ALIQUOT

**Clonality**

Polyclonal

**Ig Type**

Rabbit IgG

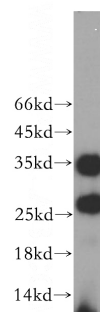
**Applications**

ELISA, WB

**Dilutions**

Recommended Dilution:

WB: 1:500-1:5000

**Validations**

Raji cells were subjected to SDS PAGE followed by western blot with Catalog No:114280(PRSS2 antibody) at dilution of 1:400