

**Product name**

PSMG3 antibody

**Immunogen**

[Human PSMG3 Recombinant protein \(GST tag\)](#)

**Specificity**

Human, Mouse, Rat; other species not tested.

**Antibody description**

PSMG3 Rabbit Polyclonal antibody. Positive IHC detected in human stomach cancer tissue, human liver cancer tissue. Observed molecular weight by Western-blot: 13-18 kDa

**Preparation**

This antibody was obtained by immunization of PSMG3 recombinant protein (Accession Number: NM\_032302). Purification method: Antigen affinity purified.

**Formulation**

PBS with 0.1% sodium azide and 50% glycerol pH 7.3.

**Storage**

Store at -20°C. DO NOT ALIQUOT

**Clonality**

Polyclonal

**Ig Type**

Rabbit IgG

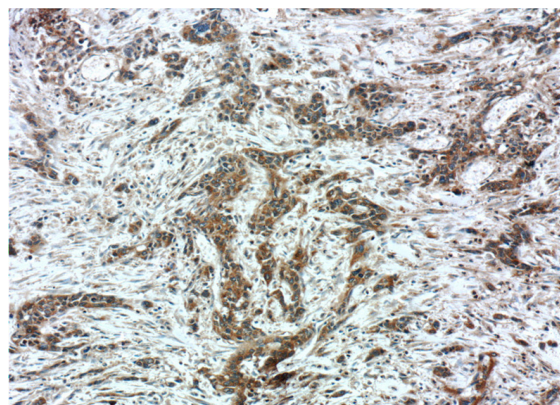
**Applications**

ELISA, IHC

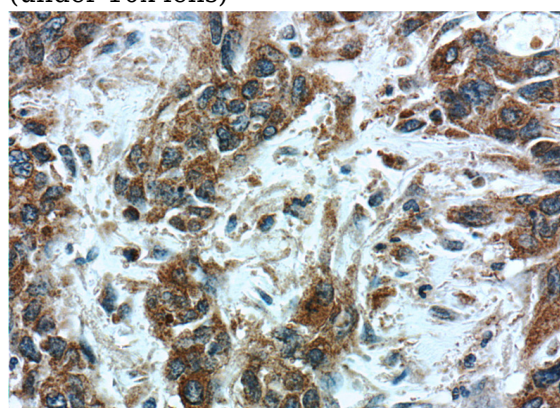
**Dilutions**

Recommended Dilution:

IHC: 1:20-1:200

**Validations**

Immunohistochemistry of paraffin-embedded human stomach cancer tissue slide using Catalog No:114252(PSMG3 Antibody) at dilution of 1:50 (under 10x lens)



Immunohistochemistry of paraffin-embedded human stomach cancer tissue slide using Catalog No:114252(PSMG3 Antibody) at dilution of 1:50 (under 40x lens)