

PSME4 antibody

Catalog Number: 114249

Product name

PSME4 antibody

Specificity

Human, Mouse, Rat; other species not tested.

Antibody description

PSME4 Rabbit Polyclonal antibody. Positive IF detected in HepG2 cells, Hela cells. Positive WB detected in HEK-293 cells, HepG2 cells. Positive IP detected in HEK-293 cells. Observed molecular weight by Western-blot: 140kd

Preparation

This antibody was obtained by immunization of Peptide (Accession Number: BC113668). Purification method: Antigen affinity purified.

Formulation

PBS with 0.02% sodium azide and 50% glycerol pH 7.3.

Storage

Store at -20°C. DO NOT ALIQUOT

Clonality

Polyclonal

Ig Type

Rabbit IgG

Applications

ELISA, WB, IF, IP

Dilutions

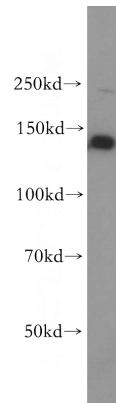
Recommended Dilution:

WB: 1:500-1:5000

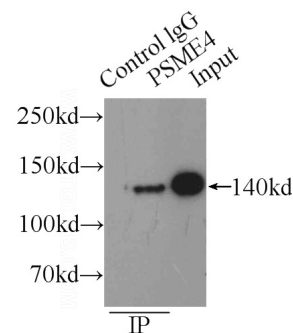
IP: 1:200-1:2000

IF: 1:10-1:100

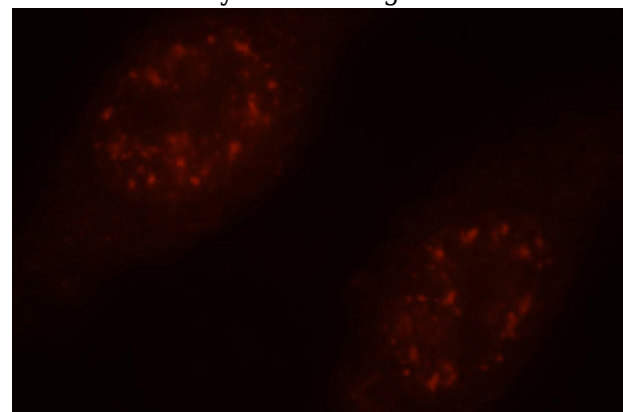
Validations



HEK-293 cells were subjected to SDS PAGE followed by western blot with Catalog No:114249(PSME4 antibody) at dilution of 1:400



IP Result of anti-PSME4 (IP:Catalog No:114249, 3ug; Detection:Catalog No:114249 1:500) with HEK-293 cells lysate 1760ug.



Immunofluorescent analysis of HepG2 cells, using PSME4 antibody Catalog No:114249 at 1:25 dilution and Rhodamine-labeled goat anti-rabbit

PSME4 antibody



Catalog Number: 114249

IgG (red).