

# PSMD5 antibody

Catalog Number: 114243

## Product name

PSMD5 antibody

IP: 1:200-1:2000

IHC: 1:20-1:200

## Specificity

Human, Mouse, Rat; other species not tested.

## Antibody description

PSMD5 Rabbit Polyclonal antibody. Positive IHC detected in human prostate cancer tissue. Positive WB detected in mouse liver tissue, human liver tissue, Jurkat cells. Positive IP detected in mouse liver tissue. Observed molecular weight by Western-blot: 50 kDa

## Preparation

This antibody was obtained by immunization of PSMD5 recombinant protein (Accession Number: NM\_005047). Purification method: Antigen affinity purified.

## Formulation

PBS with 0.1% sodium azide and 50% glycerol pH 7.3.

## Storage

Store at -20°C. DO NOT ALIQUOT

## Clonality

Polyclonal

## Ig Type

Rabbit IgG

## Applications

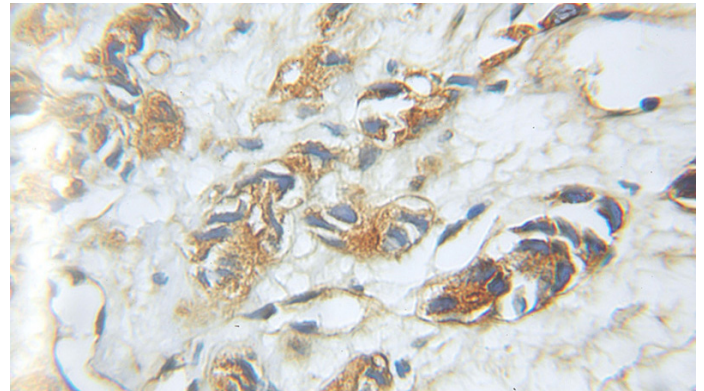
ELISA, IHC, IP, WB

## Dilutions

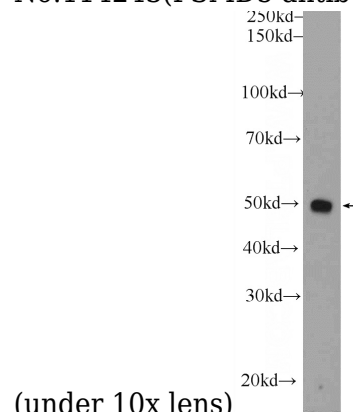
Recommended Dilution:

WB: 1:500-1:5000

## Validations

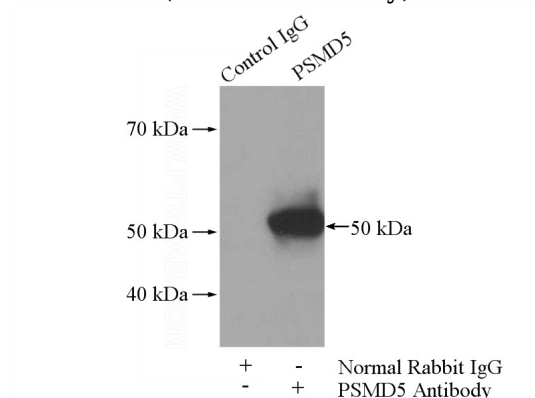


Immunohistochemical of paraffin-embedded human prostate cancer using Catalog No:114243(PSMD5 antibody) at dilution of 1:100



(under 10x lens)

mouse liver tissue were subjected to SDS PAGE followed by western blot with Catalog No:114243(PSMD5 Antibody) at dilution of 1:1000



IP Result of anti-PSMD5 (IP:Catalog No:114243, 4ug; Detection:Catalog No:114243 1:800) with

# PSMD5 antibody



Catalog Number: 114243

---

mouse liver tissue lysate 4000ug.