

# PRPSAP2 antibody



Catalog Number: 114240

## Product name

PRPSAP2 antibody

IHC: 1:20-1:200

IF: 1:10-1:100

## Specificity

Human, Mouse, Rat; other species not tested.

## Antibody description

PRPSAP2 Rabbit Polyclonal antibody. Positive WB detected in mouse brain tissue, BxPC-3 cells, HeLa cells. Positive IHC detected in human pancreas tissue. Positive IF detected in BxPC-3 cells. Observed molecular weight by Western-blot: 41kd

## Preparation

This antibody was obtained by immunization of PRPSAP2 recombinant protein (Accession Number: XM\_005256726). Purification method: Antigen affinity purified.

## Formulation

PBS with 0.02% sodium azide and 50% glycerol pH 7.3.

## Storage

Store at -20°C. DO NOT ALIQUOT

## Clonality

Polyclonal

## Ig Type

Rabbit IgG

## Applications

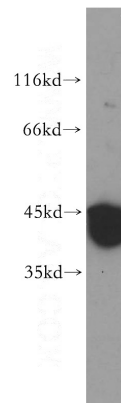
ELISA, WB, IHC, IF

## Dilutions

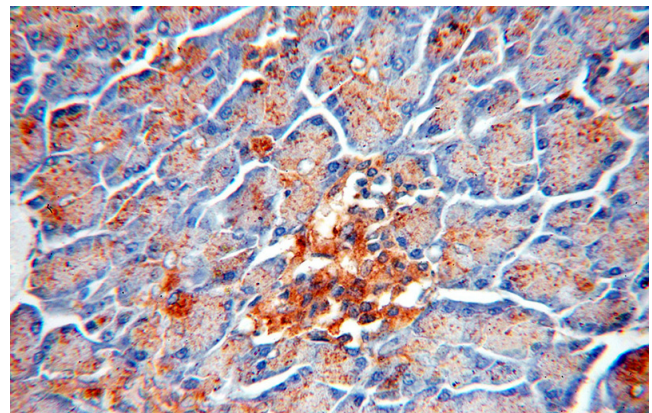
Recommended Dilution:

WB: 1:1000-1:10000

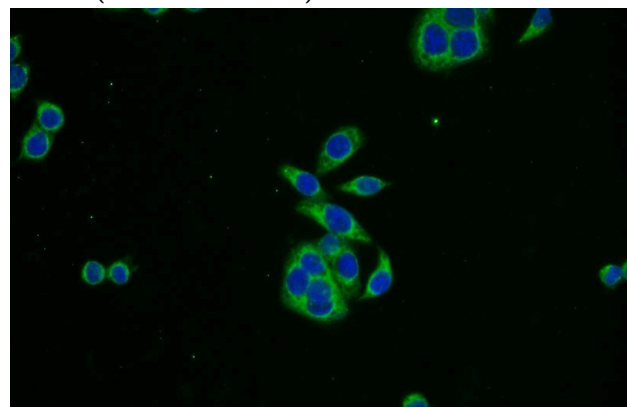
## Validations



mouse brain tissue were subjected to SDS PAGE followed by western blot with Catalog No:114240(PRPSAP2 antibody) at dilution of 1:1000



Immunohistochemical of paraffin-embedded human pancreas using Catalog No:114240(PRPSAP2 antibody) at dilution of 1:100 (under 40x lens)



# PRPSAP2 antibody



Catalog Number: 114240

---

Immunofluorescent analysis of BxPC-3 cells using Catalog No:114240(PRPSAP2 Antibody) at dilution of 1:25 and Alexa Fluor 488-conjugated AffiniPure Goat Anti-Rabbit IgG(H+L)