

PRPH2 antibody



Catalog Number: 114236

Product name

PRPH2 antibody

Specificity

Human, Mouse, Rat; other species not tested.

Antibody description

PRPH2 Rabbit Polyclonal antibody. Positive IF detected in mouse Retina tissue. Positive WB detected in mouse eye tissue. Observed molecular weight by Western-blot: 39 kDa

Preparation

This antibody was obtained by immunization of PRPH2 recombinant protein (Accession Number: NM_000322). Purification method: Antigen affinity purified.

Formulation

PBS with 0.02% sodium azide and 50% glycerol pH 7.3.

Storage

Store at -20°C. DO NOT ALIQUOT

Clonality

Polyclonal

Ig Type

Rabbit IgG

Applications

ELISA, WB, IF

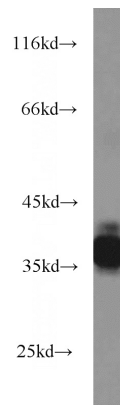
Dilutions

Recommended Dilution:

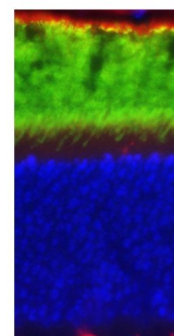
WB: 1:500-1:5000

IF: 1:20-1:200

Validations



mouse eye tissue were subjected to SDS PAGE followed by western blot with Catalog No:114236(PRPH2 antibody) at dilution of 1:1000



IF result of PRPH2 in Mouse Retina
OS
IS
ONL
Tissue: Mouse retina
Red: Rhodopsin, marker of OS
Green: PRPH2
Blue: DAPI for nucleus
Acronym:
OS: Outer segment
IS: Inner segment
ONL: Outer nuclear layer

IF result of anti-PRPH2(Catalog No:114236) in Mouse Retina by Dr. Seongjin Seo. OS(Outer segment) Stain.