

# PRPF8 antibody

Catalog Number: 114235

## Product name

PRPF8 antibody

## Specificity

Human, Mouse, Rat; other species not tested.

## Antibody description

PRPF8 Rabbit Polyclonal antibody. Positive IP detected in HeLa cells. Positive WB detected in HeLa cells, human placenta tissue, Jurkat cells, K-562 cells. Observed molecular weight by Western-blot: 220 kDa

## Preparation

This antibody was obtained by immunization of PRPF8 recombinant protein (Accession Number: NM\_006445). Purification method: Antigen affinity purified.

## Formulation

PBS with 0.1% sodium azide and 50% glycerol pH 7.3.

## Storage

Store at -20°C. DO NOT ALIQUOT

## Clonality

Polyclonal

## Ig Type

Rabbit IgG

## Applications

ELISA, WB, IP

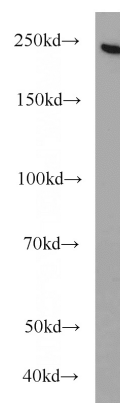
## Dilutions

Recommended Dilution:

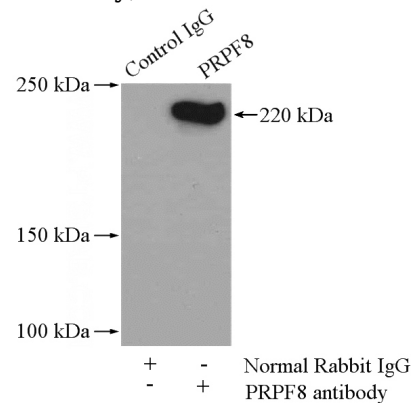
WB: 1:500-1:5000

IP: 1:200-1:2000

## Validations



HeLa cells were subjected to SDS PAGE followed by western blot with Catalog No:114235(PRPF8 antibody) at dilution of 1:800



IP Result of anti-PRPF8 (IP:Catalog No:114235, 4ug; Detection:Catalog No:114235 1:500) with HeLa cells lysate 2000ug.