

PRPF6 antibody

Catalog Number: 114234

Product name

PRPF6 antibody

IP: 1:200-1:1000

IHC: 1:20-1:200

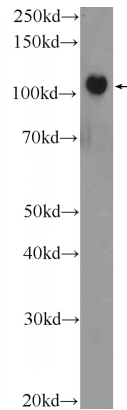
Specificity

Human, Mouse; other species not tested.

Validations

Antibody description

PRPF6 Rabbit Polyclonal antibody. Positive IHC detected in human testis tissue. Positive IP detected in HeLa cells. Positive WB detected in HEK-293 cells, HeLa cells, NIH/3T3 cells. Observed molecular weight by Western-blot: 100 kDa



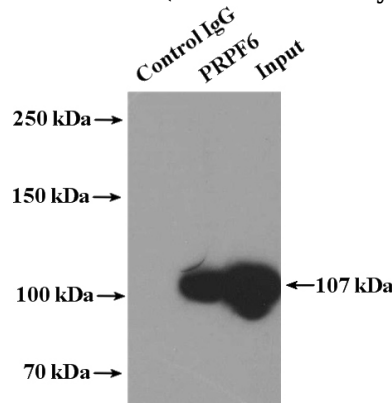
Preparation

This antibody was obtained by immunization of PRPF6 recombinant protein (Accession Number: NM_012469). Purification method: Antigen Affinity purified.

HEK-293 cells were subjected to SDS PAGE followed by western blot with Catalog No:114234 (PRPF6 Antibody) at dilution of 1:1000

Formulation

PBS with 0.02% sodium azide and 50% glycerol pH 7.3.



Storage

Store at -20°C. DO NOT ALIQUOT

Clonality

Polyclonal

Ig Type

Rabbit IgG

Applications

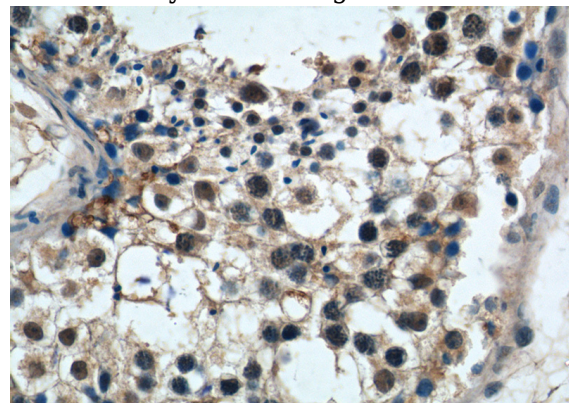
ELISA, WB, IHC, IP

Dilutions

Recommended Dilution:

WB: 1:500-1:5000

IP Result of anti-PRPF6 (IP:Catalog No:114234, 4ug; Detection:Catalog No:114234 1:300) with HeLa cells lysate 3200ug.



Immunohistochemistry of paraffin-embedded human testis tissue slide using Catalog

PRPF6 antibody



Catalog Number: 114234

No:114234(PRPF6 Antibody) at dilution of 1:50 (under 40x lens)