

# PRPF40B antibody



Catalog Number: 114233

## Product name

PRPF40B antibody

IP: 1:1000-1:10000

IF: 1:10-1:100

## Specificity

Human, Mouse, Rat; other species not tested.

## Antibody description

PRPF40B Rabbit Polyclonal antibody. Positive IP detected in Y79 cells. Positive WB detected in Y79 cells. Positive IF detected in HepG2 cells. Observed molecular weight by Western-blot: 100-110 kDa

## Preparation

This antibody was obtained by immunization of PRPF40B recombinant protein (Accession Number: XM\_011538141). Purification method: Antigen affinity purified.

## Formulation

PBS with 0.02% sodium azide and 50% glycerol pH 7.3.

## Storage

Store at -20°C. DO NOT ALIQUOT

## Clonality

Polyclonal

## Ig Type

Rabbit IgG

## Applications

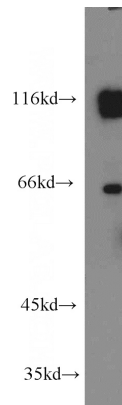
ELISA, WB, IF, IP

## Dilutions

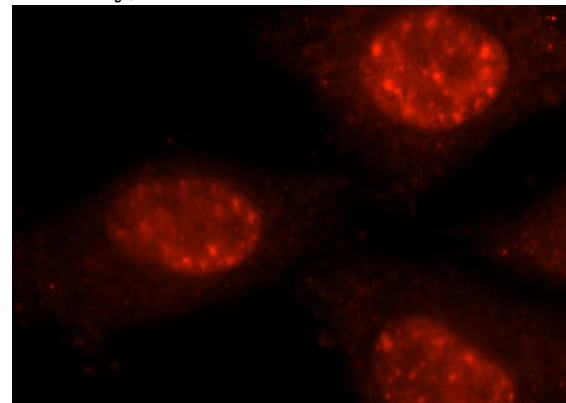
Recommended Dilution:

WB: 1:500-1:5000

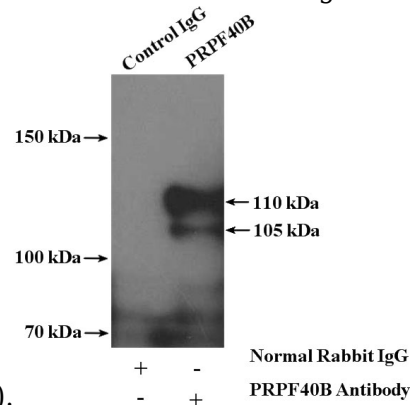
## Validations



Y79 cells were subjected to SDS PAGE followed by western blot with Catalog No:114233 (PRPF40B antibody) at dilution of 1:1000



Immunofluorescent analysis of HepG2 cells, using PRPF40B antibody Catalog No:114233 at 1:25 dilution and Rhodamine-labeled goat anti-rabbit



IP Result of anti-PRPF40B (IP:Catalog No:114233,

# PRPF40B antibody



Catalog Number: 114233

---

4ug; Detection:Catalog No:114233 1:2000) with Y79 cells lysate 800ug.