

# PRPF38A antibody



Catalog Number: 114229

## Product name

PRPF38A antibody

## Specificity

Human; other species not tested.

## Antibody description

PRPF38A Rabbit Polyclonal antibody. Positive IF detected in HepG2 cells. Positive WB detected in K-562 cells, HepG2 cells. Observed molecular weight by Western-blot: 37-40 kDa

## Preparation

This antibody was obtained by immunization of PRPF38A recombinant protein (Accession Number: NM\_032284). Purification method: Antigen affinity purified.

## Formulation

PBS with 0.1% sodium azide and 50% glycerol pH 7.3.

## Storage

Store at -20°C. DO NOT ALIQUOT

## Clonality

Polyclonal

## Ig Type

Rabbit IgG

## Applications

ELISA, WB, IF

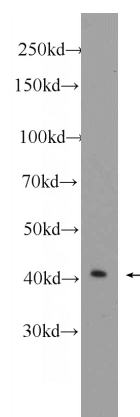
## Dilutions

Recommended Dilution:

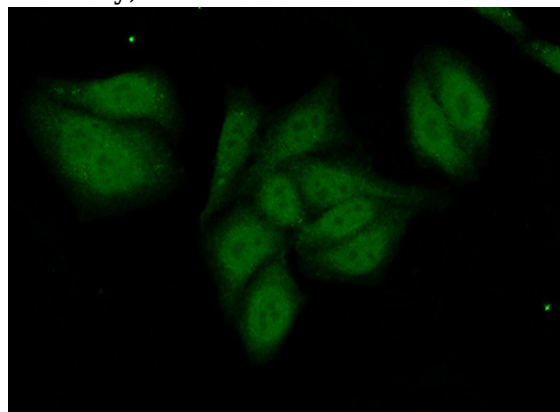
WB: 1:200-1:1000

IF: 1:20-1:200

## Validations



K-562 cells were subjected to SDS PAGE followed by western blot with Catalog No:114229(PRPF38A Antibody) at dilution of 1:300



Immunofluorescent analysis of (10% Formaldehyde) fixed HepG2 cells using Catalog No:114229(PRPF38A Antibody) at dilution of 1:50 and Alexa Fluor 488-conjugated AffiniPure Goat Anti-Rabbit IgG(H+L)