

Protein C inhibitor antibody



Catalog Number: 114222

Product name

Protein C inhibitor antibody

Specificity

Human; other species not tested.

Antibody description

Protein C inhibitor Rabbit Polyclonal antibody. Positive WB detected in HepG2 cells, A549 cells, HeLa cells, Jurkat cells, L02 cells, PC-3 cells. Positive IF detected in HepG2 cells. Positive IHC detected in human ovary tumor tissue, human breast cancer tissue, human testis tissue. Observed molecular weight by Western-blot: 46 kDa

Preparation

This antibody was obtained by immunization of Protein C inhibitor recombinant protein (Accession Number: NM_000624). Purification method: Antigen affinity purified.

Formulation

PBS with 0.1% sodium azide and 50% glycerol pH 7.3.

Storage

Store at -20°C. DO NOT ALIQUOT

Clonality

Polyclonal

Ig Type

Rabbit IgG

Applications

ELISA, WB, IHC, IF

Dilutions

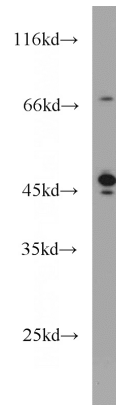
Recommended Dilution:

WB: 1:500-1:5000

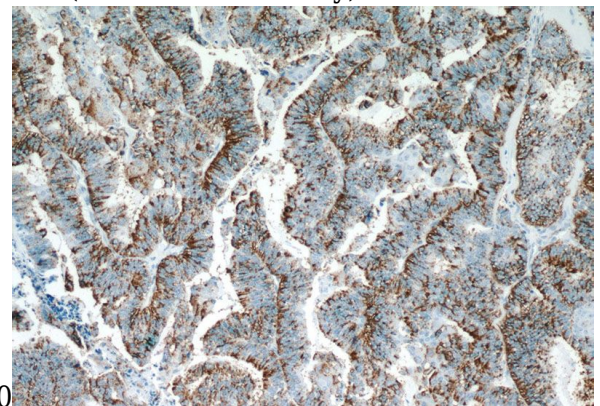
IHC: 1:20-1:200

IF: 1:50-1:500

Validations



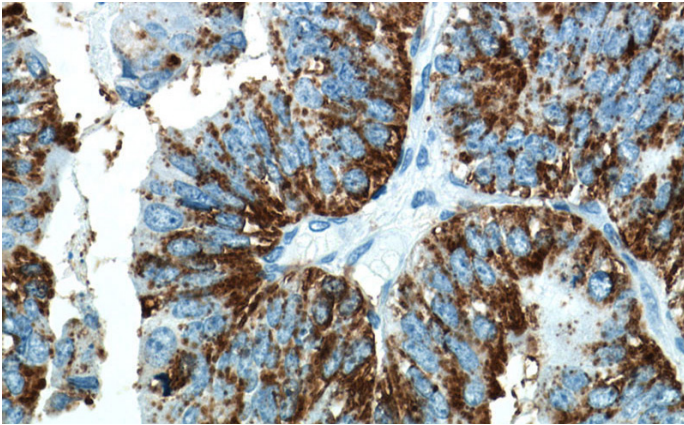
HepG2 cells were subjected to SDS PAGE followed by western blot with Catalog No:114222(SERPINA5 antibody) at dilution of



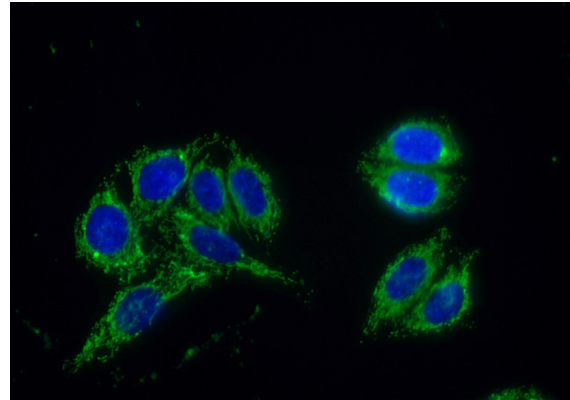
1:1000
Immunohistochemistry of paraffin-embedded human ovary tumor tissue slide using Catalog No:114222(SERPINA5 Antibody) at dilution of 1:50 (under 10x lens)

Protein C inhibitor antibody

Catalog Number: 114222



Immunohistochemistry of paraffin-embedded human ovary tumor tissue slide using Catalog No:114222(SERPINA5 Antibody) at dilution of 1:50 (under 40x lens)



Immunofluorescent analysis of (10% Formaldehyde) fixed HepG2 cells using Catalog No:114222(SERPINA5 Antibody) at dilution of 1:50 and Alexa Fluor 488-conjugated AffiniPure Goat Anti-Rabbit IgG(H+L)