

PROS1 antibody



Catalog Number: 114219

Product name

PROS1 antibody

Specificity

Human, Mouse; other species not tested.

Antibody description

PROS1 Rabbit Polyclonal antibody. Positive IHC detected in human liver tissue. Positive WB detected in human placenta tissue, mouse placenta tissue. Observed molecular weight by Western-blot: 70 kDa

Preparation

This antibody was obtained by immunization of PROS1 recombinant protein (Accession Number: NM_000313). Purification method: Antigen affinity purified.

Formulation

PBS with 0.02% sodium azide and 50% glycerol pH 7.3.

Storage

Store at -20°C. DO NOT ALIQUOT

Clonality

Polyclonal

Ig Type

Rabbit IgG

Applications

ELISA, WB, IHC

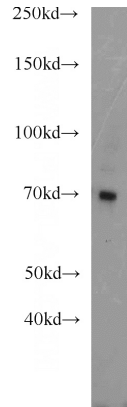
Dilutions

Recommended Dilution:

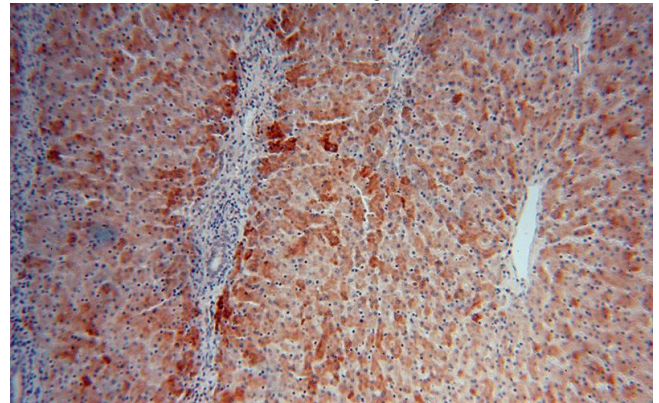
WB: 1:200-1:2000

IHC: 1:20-1:200

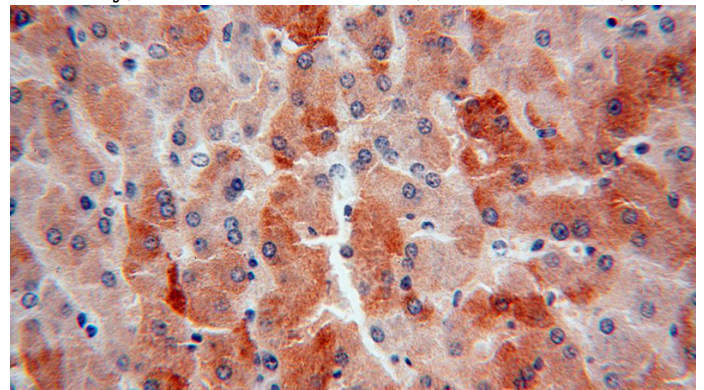
Validations



human placenta tissue were subjected to SDS PAGE followed by western blot with Catalog No:114219(PROS1 antibody) at dilution of 1:1000



Immunohistochemical of paraffin-embedded human liver using Catalog No:114219(PROS1 antibody) at dilution of 1:100 (under 10x lens)



Immunohistochemical of paraffin-embedded human liver using Catalog No:114219(PROS1 antibody) at dilution of 1:100 (under 40x lens)