

# PRKCSH antibody

Catalog Number: 114200

## Product name

PRKCSH antibody

IP: 1:500-1:5000

IHC: 1:20-1:200

## Specificity

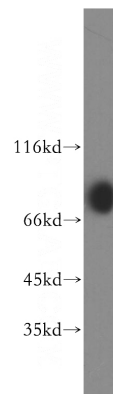
Human, Mouse, Rat; other species not tested.

IF: 1:50-1:500

## Antibody description

PRKCSH Rabbit Polyclonal antibody. Positive IHC detected in human colon cancer tissue. Positive IF detected in HeLa cells. Positive WB detected in HeLa cells, A431 cells, mouse liver tissue. Positive IP detected in HeLa cells. Observed molecular weight by Western-blot: 80 kDa

## Validations



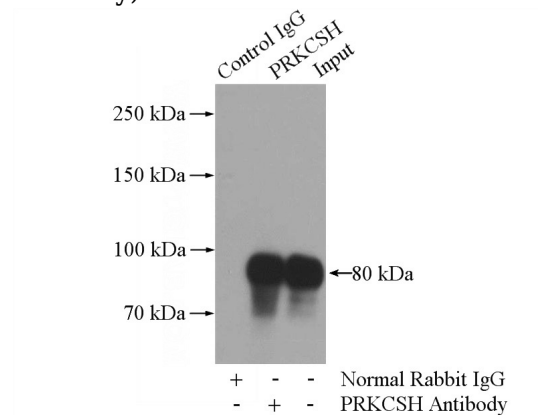
## Preparation

This antibody was obtained by immunization of PRKCSH recombinant protein (Accession Number: BC013586). Purification method: Antigen affinity purified.

HeLa cells were subjected to SDS PAGE followed by western blot with Catalog No:114200(PRKCSH antibody) at dilution of 1:1000

## Formulation

PBS with 0.1% sodium azide and 50% glycerol pH 7.3.



## Storage

Store at -20°C. DO NOT ALIQUOT

## Clonality

Polyclonal

## Ig Type

Rabbit IgG

## Applications

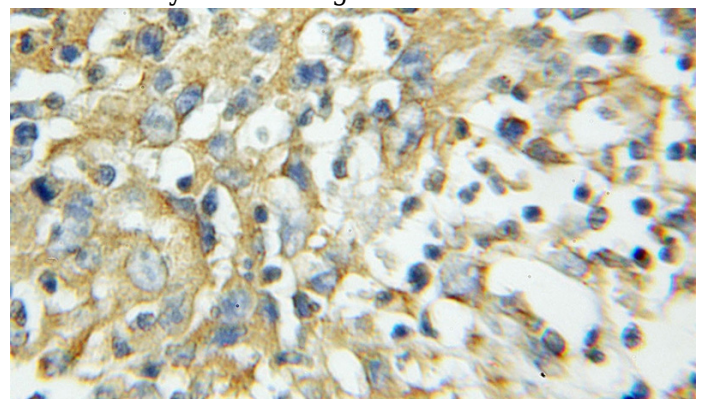
ELISA, WB, IHC, IP, IF

## Dilutions

Recommended Dilution:

WB: 1:1000-1:10000

IP Result of anti-PRKCSH (IP:Catalog No:114200, 4ug; Detection:Catalog No:114200 1:1000) with HeLa cells lysate 2000ug.



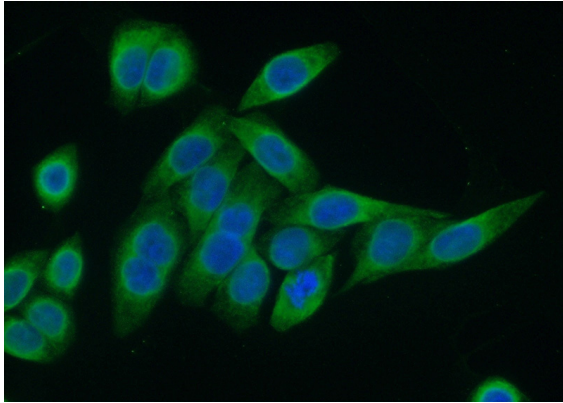
# PRKCSH antibody



Catalog Number: 114200

---

Immunohistochemical of paraffin-embedded human colon cancer using Catalog No:114200(PRKCSH antibody) at dilution of 1:100 (under 10x lens)



Immunofluorescent analysis of (10% Formaldehyde) fixed HeLa cells using Catalog No:114200(PRKCSH Antibody) at dilution of 1:50 and Alexa Fluor 488-conjugated AffiniPure Goat Anti-Rabbit IgG(H+L)