

Presenilin-1-Specific antibody



Catalog Number: 114186

Product name

Presenilin-1-Specific antibody

Specificity

Human, Mouse, Rat; other species not tested.

Antibody description

Presenilin-1-Specific Rabbit Polyclonal antibody.
Positive WB detected in human kidney tissue.
Positive IP detected in mouse kidney tissue.
Observed molecular weight by Western-blot: 53 kDa

Preparation

This antibody was obtained by immunization of Peptide (Accession Number: NM_000021).
Purification method: Antigen affinity purified.

Formulation

PBS with 0.02% sodium azide and 50% glycerol pH 7.3.

Storage

Store at -20°C. DO NOT ALIQUOT

Clonality

Polyclonal

Ig Type

Rabbit IgG

Applications

ELISA, WB, IP

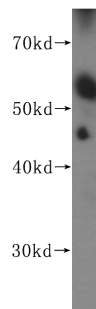
Dilutions

Recommended Dilution:

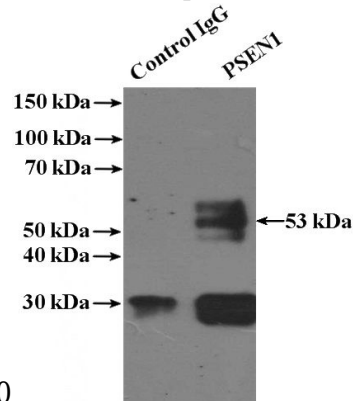
WB: 1:500-1:5000

IP: 1:500-1:5000

Validations



human kidney tissue were subjected to SDS PAGE followed by western blot with Catalog No:114186(PSEN1-Specific antibody) at dilution



of 1:600

IP Result of anti-PSEN1-Specific (IP:Catalog No:114186, 4ug; Detection:Catalog No:114186 1:1000) with mouse kidney tissue lysate 4000ug.