

# PRAS40 antibody



Catalog Number: 114167

## Product name

PRAS40 antibody

## Specificity

Human; other species not tested.

## Antibody description

PRAS40 Rabbit Polyclonal antibody. Positive IF detected in HeLa cells. Positive WB detected in MCF-7 cells, HeLa cells. Observed molecular weight by Western-blot: 40 kDa

## Preparation

This antibody was obtained by immunization of PRAS40 recombinant protein (Accession Number: NM\_001278160). Purification method: Antigen affinity purified.

## Formulation

PBS with 0.1% sodium azide and 50% glycerol pH 7.3.

## Storage

Store at -20°C. DO NOT ALIQUOT

## Clonality

Polyclonal

## Ig Type

Rabbit IgG

## Applications

ELISA, WB, IF

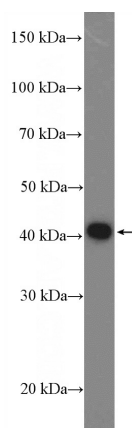
## Dilutions

Recommended Dilution:

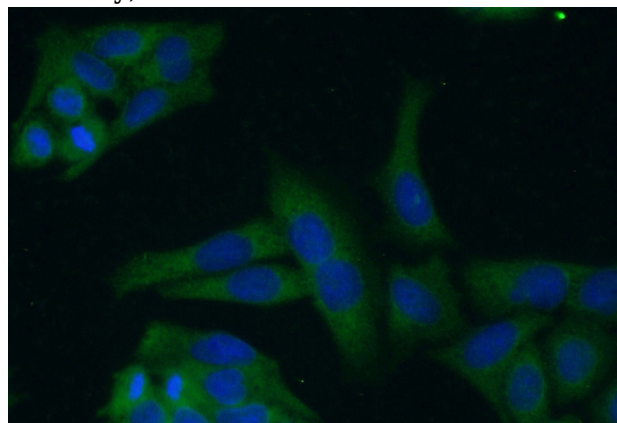
WB: 1:500-1:5000

IF: 1:50-1:500

## Validations



MCF-7 cells were subjected to SDS PAGE followed by western blot with Catalog No:114167(PRAS40 Antibody) at dilution of 1:1000



Immunofluorescent analysis of (-20oc Ethanol) fixed HeLa cells using Catalog No:114167(PRAS40 Antibody) at dilution of 1:50 and Alexa Fluor 488-conjugated AffiniPure Goat Anti-Rabbit IgG(H+L)