

# PRAME antibody

Catalog Number: 114165

## Product name

PRAME antibody

## Specificity

Human; other species not tested.

## Antibody description

PRAME Rabbit Polyclonal antibody. Positive IP detected in A549 cells. Positive WB detected in A549 cells, HepG2 cells. Observed molecular weight by Western-blot: 58 kDa

## Preparation

This antibody was obtained by immunization of PRAME recombinant protein (Accession Number: NM\_001291716). Purification method: Antigen affinity purified.

## Formulation

PBS with 0.1% sodium azide and 50% glycerol pH 7.3.

## Storage

Store at -20°C. DO NOT ALIQUOT

## Clonality

Polyclonal

## Ig Type

Rabbit IgG

## Applications

ELISA, WB, IP

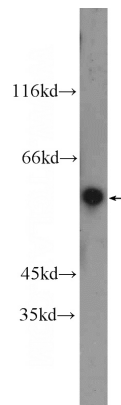
## Dilutions

Recommended Dilution:

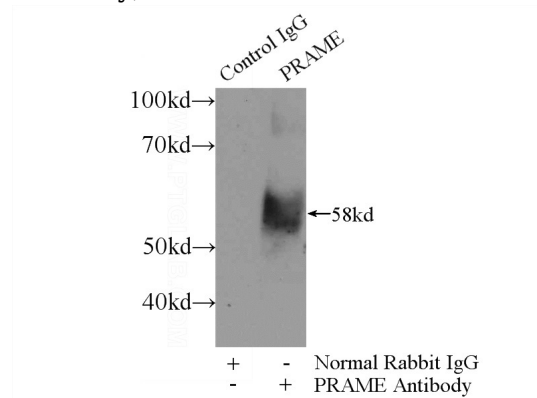
WB: 1:200-1:1000

IP: 1:200-1:1000

## Validations



A549 cells were subjected to SDS PAGE followed by western blot with Catalog No:114165(PRAME Antibody) at dilution of 1:300



IP Result of anti-PRAME (IP:Catalog No:114165, 3ug; Detection:Catalog No:114165 1:300) with A549 cells lysate 2400ug.