

# PPPDE1/PNAS4 antibody



Catalog Number: 114156

## Product name

PPPDE1/PNAS4 antibody

IP: 1:200-1:2000

IHC: 1:20-1:200

## Specificity

Human, Mouse, Rat; other species not tested.

IF: 1:10-1:100

## Antibody description

PPPDE1/PNAS4 Rabbit Polyclonal antibody. Positive WB detected in HeLa cells, A549 cells. Positive IP detected in A549 cells. Positive IHC detected in human lung cancer tissue. Positive IF detected in HepG2 cells. Observed molecular weight by Western-blot: 23 kDa

## Preparation

This antibody was obtained by immunization of PPPDE1/PNAS4 recombinant protein (Accession Number: NM\_016076). Purification method: Antigen affinity purified.

## Formulation

PBS with 0.02% sodium azide and 50% glycerol pH 7.3.

## Storage

Store at -20°C. DO NOT ALIQUOT

## Clonality

Polyclonal

## Ig Type

Rabbit IgG

## Applications

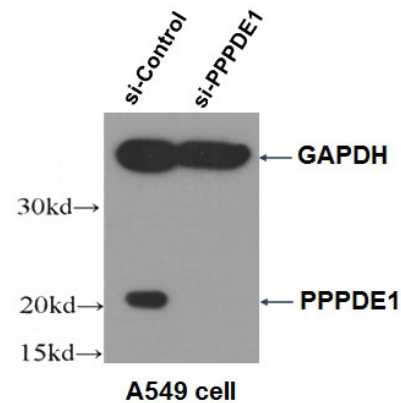
ELISA, WB, IHC, IF, IP

## Dilutions

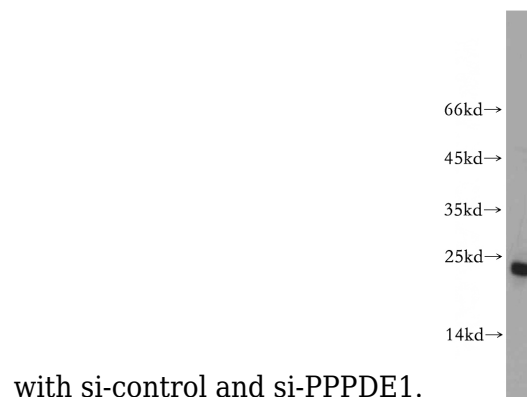
Recommended Dilution:

WB: 1:200-1:2000

## Validations

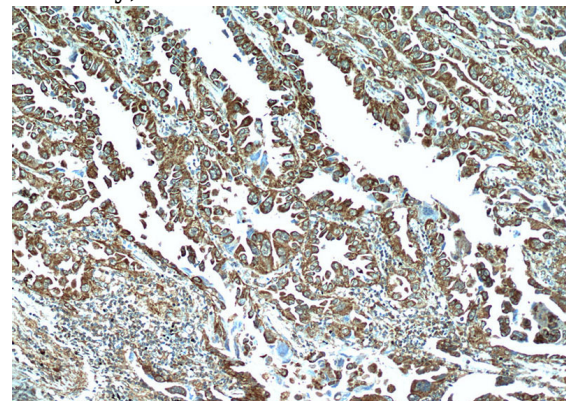


WB result of PPPDE1 antibody (Catalog No:114156, 1:1000) with A549 cells transfected



with si-control and si-PPPDE1.

HeLa cells were subjected to SDS PAGE followed by western blot with Catalog No:114156(PPPDE1 antibody) at dilution of 1:500

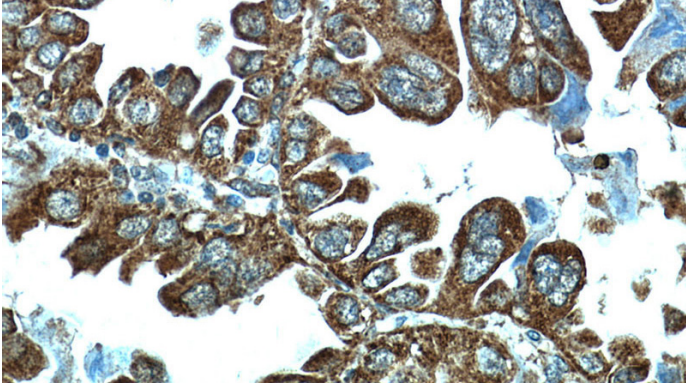


Immunohistochemical of paraffin-embedded

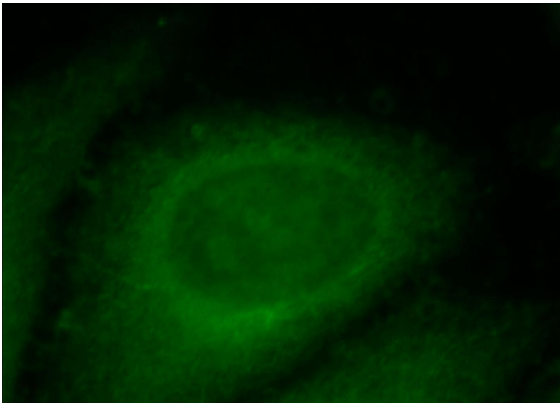
# PPPDE1/PNAS4 antibody

Catalog Number: 114156

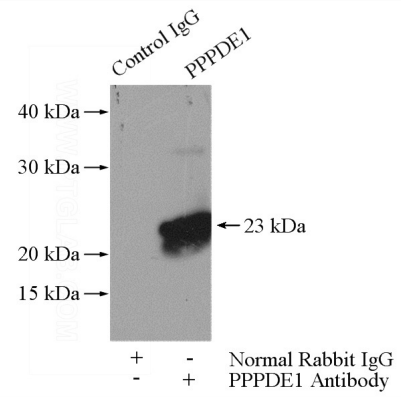
human lung cancer using Catalog No:114156(PPPDE1 antibody) at dilution of 1:50 (under 10x lens)



Immunohistochemical of paraffin-embedded human lung cancer using Catalog No:114156(PPPDE1 antibody) at dilution of 1:50 (under 40x lens)



Immunofluorescent analysis of HepG2 cells, using PPPDE1 antibody Catalog No:114156 at 1:25 dilution and FITC- labeled goat anti-Rabbit IgG



(green).

IP Result of anti-PPPDE1 (IP:Catalog No:114156, 4ug; Detection:Catalog No:114156 1:500) with A549 cells lysate 2800ug.