

PPP1R13L antibody



Catalog Number: 114149

Product name

PPP1R13L antibody

WB: 1:500-1:5000

IP: 1:500-1:5000

Specificity

Human, Rat, Mouse; other species not tested.

IHC: 1:20-1:200

IF: 1:10-1:100

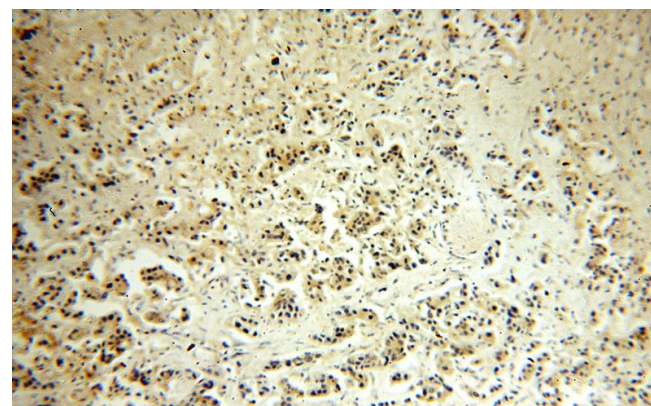
Antibody description

PPP1R13L Rabbit Polyclonal antibody. Positive IP detected in PC-3 cells. Positive WB detected in NIH/3T3 cells, Apoptosised HeLa cells, C6 cells, MCF7 cells, PC-3 cells. Positive IHC detected in human breast cancer tissue. Positive IF detected in MCF-7 cells. Observed molecular weight by Western-blot: 110 kDa

Validations

Preparation

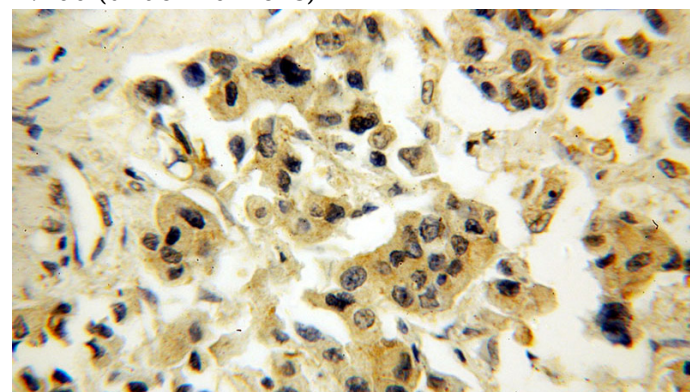
This antibody was obtained by immunization of PPP1R13L recombinant protein (Accession Number: XM_017026177). Purification method: Antigen affinity purified.



Immunohistochemical of paraffin-embedded human breast cancer using Catalog No:114149(PPP1R13L antibody) at dilution of 1:100 (under 10x lens)

Formulation

PBS with 0.02% sodium azide and 50% glycerol pH 7.3.



Immunohistochemical of paraffin-embedded human breast cancer using Catalog No:114149(PPP1R13L antibody) at dilution of 1:100 (under 40x lens)

Storage

Store at -20°C. DO NOT ALIQUOT

Clonality

Polyclonal

Ig Type

Rabbit IgG

Applications

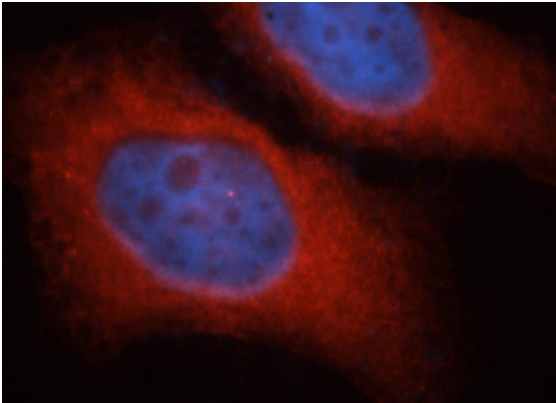
ELISA, IHC, IF, IP, WB

Dilutions

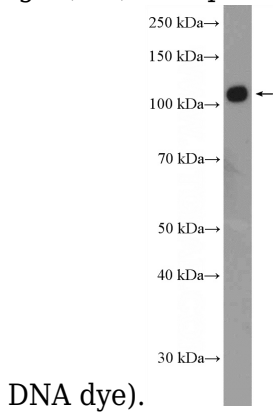
Recommended Dilution:

PPP1R13L antibody

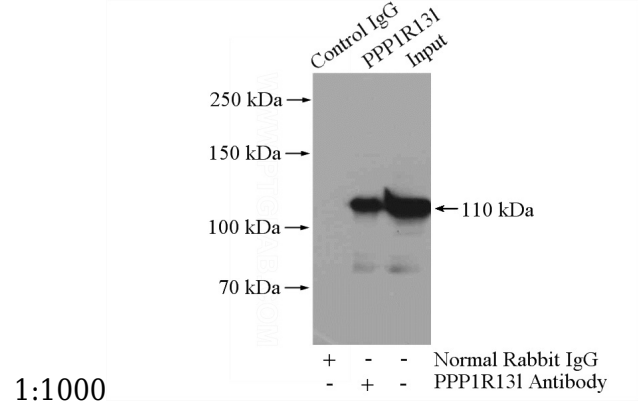
Catalog Number: 114149



Immunofluorescent analysis of MCF-7 cells, using PPP1R13L antibody Catalog No:114149 at 1:25 dilution and Rhodamine-labeled goat anti-rabbit IgG (red). Blue pseudocolor = DAPI (fluorescent



NIH/3T3 cells were subjected to SDS PAGE followed by western blot with Catalog No:114149(PPP1R13L Antibody) at dilution of



IP Result of anti-PPP1R13L (IP:Catalog No:114149, 4ug; Detection:Catalog No:114149 1:1000) with PC-3 cells lysate 1040ug.