

PPP1CB-Specific antibody



Catalog Number: 114143

Product name

WB: 1:500-1:5000

PPP1CB-Specific antibody

IP: 1:500-1:5000

Specificity

IHC: 1:20-1:200

Human, Mouse, Rat; other species not tested.

IF: 1:20-1:200

Antibody description

PPP1CB-Specific Rabbit Polyclonal antibody.
Positive IP detected in mouse brain tissue. Positive WB detected in human brain tissue, NIH/3T3. Positive IHC detected in human prostate cancer tissue. Positive IF detected in NIH/3T3 cells. Observed molecular weight by Western-blot: 37 kDa

Preparation

This antibody was obtained by immunization of PPP1CB-Specific recombinant protein (Accession Number: NM_002709). Purification method: Antigen affinity purified.

Formulation

PBS with 0.1% sodium azide and 50% glycerol pH 7.3.

Storage

Store at -20°C. DO NOT ALIQUOT

Clonality

Polyclonal

Ig Type

Rabbit IgG

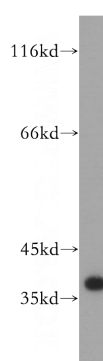
Applications

ELISA, WB, IHC, IP, IF

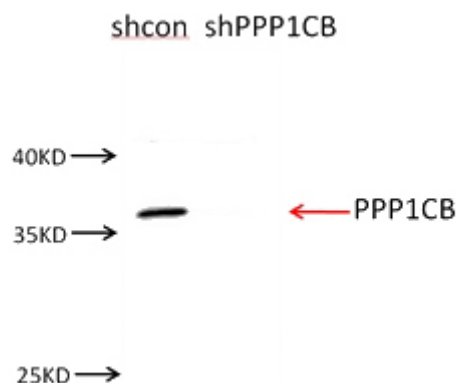
Dilutions

Recommended Dilution:

Validations



human brain tissue were subjected to SDS PAGE followed by western blot with Catalog No:114143(PPP1CB antibody) at dilution of 1:1500

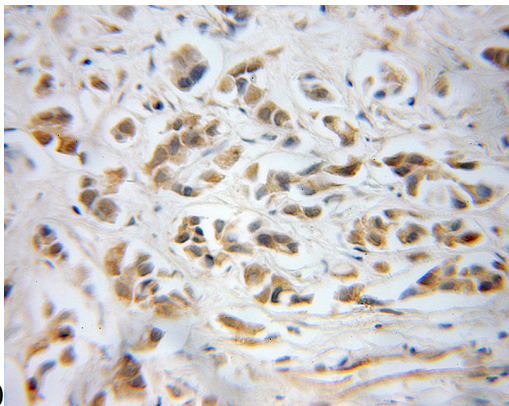


NIH3T3 cells were subjected to SDS PAGE followed by western blot with Catalog No:114143(PPP1CB antibody) at dilution of

PPP1CB-Specific antibody

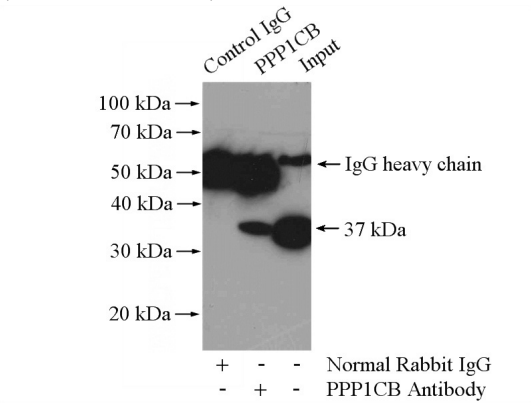


Catalog Number: 114143

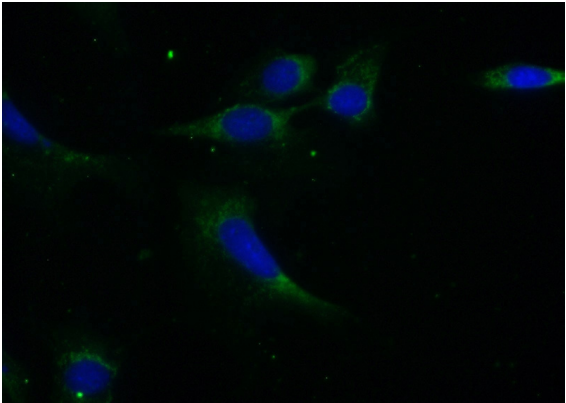


1:1500

Immunohistochemical of paraffin-embedded human prostate cancer using Catalog No:114143(PPP1CB antibody) at dilution of 1:50 (under 40x lens)



IP Result of anti-PPP1CB (IP:Catalog No:114143, 4ug; Detection:Catalog No:114143 1:1000) with mouse brain tissue lysate 4000ug.



Immunofluorescent analysis of (-20oc Ethanol) fixed NIH/3T3 cells using Catalog No:114143(PPP1CB Antibody) at dilution of 1:50 and Alexa Fluor 488-conjugated AffiniPure Goat Anti-Rabbit IgG(H+L)