

# PPP3R2 antibody

Catalog Number: 114115

## Product name

PPP3R2 antibody

## Specificity

human, mouse, rat; other species not tested.

## Antibody description

PPP3R2 Rabbit Polyclonal antibody. Positive WB detected in mouse testis tissue. Positive IHC detected in human prostate cancer. Observed molecular weight by Western-blot: 20kd

## Preparation

This antibody was obtained by immunization of PPP3R2 recombinant protein (Accession Number: BC030595). Purification method: Antigen affinity purified.

## Formulation

PBS with 0.02% sodium azide and 50% glycerol pH 7.3.

## Storage

Store at -20°C. DO NOT ALIQUOT

## Clonality

Polyclonal

## Ig Type

Rabbit IgG

## Applications

ELISA, WB, IHC

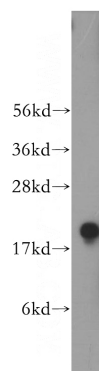
## Dilutions

Recommended Dilution:

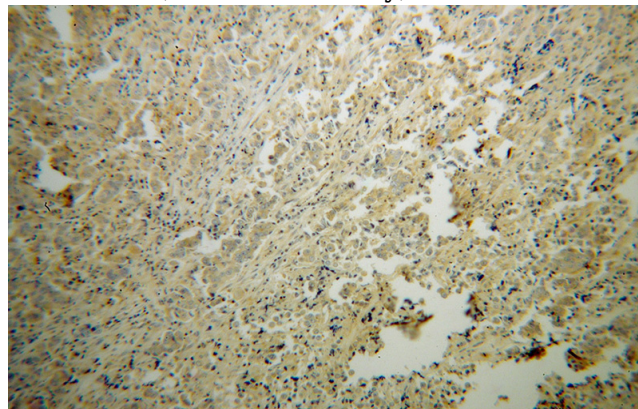
WB: 1:200-1:2000

IHC: 1:20-1:200

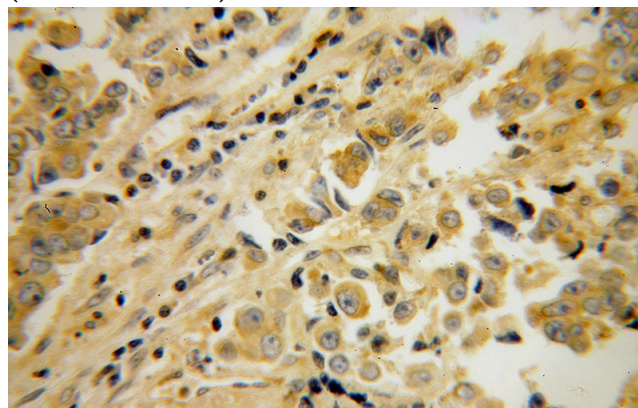
## Validations



mouse testis tissue were subjected to SDS PAGE followed by western blot with Catalog No:114115(PPP3R2 antibody) at dilution of 1:500



Immunohistochemical of paraffin-embedded human prostate cancer using Catalog No:114115(PPP3R2 antibody) at dilution of 1:50 (under 10x lens)



Immunohistochemical of paraffin-embedded human prostate cancer using Catalog No:114115(PPP3R2 antibody) at dilution of 1:50 (under 40x lens)