

# PPP3CA antibody

Catalog Number: 114108

## Product name

PPP3CA antibody

WB: 1:1000-1:10000

IP: 1:500-1:5000

## Specificity

Human, Mouse; other species not tested.

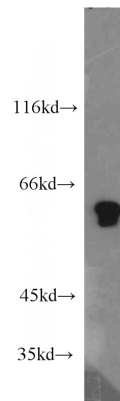
IHC: 1:20-1:200

IF: 1:20-1:200

## Antibody description

PPP3CA Rabbit Polyclonal antibody. Positive IP detected in mouse heart tissue. Positive WB detected in mouse skeletal muscle tissue, mouse heart tissue, SH-SY5Y cells. Positive IF detected in SH-SY5Y cells. Positive IHC detected in human cervical cancer tissue. Observed molecular weight by Western-blot: 61 kDa

## Validations



## Preparation

This antibody was obtained by immunization of PPP3CA recombinant protein (Accession Number: NM\_001130691). Purification method: Antigen affinity purified.

mouse skeletal muscle tissue were subjected to SDS PAGE followed by western blot with Catalog No:114108(PPP3CA antibody) at dilution of 1:1500

## Formulation

PBS with 0.02% sodium azide and 50% glycerol pH 7.3.

## Storage

Store at -20°C. DO NOT ALIQUOT

## Clonality

Polyclonal

## Ig Type

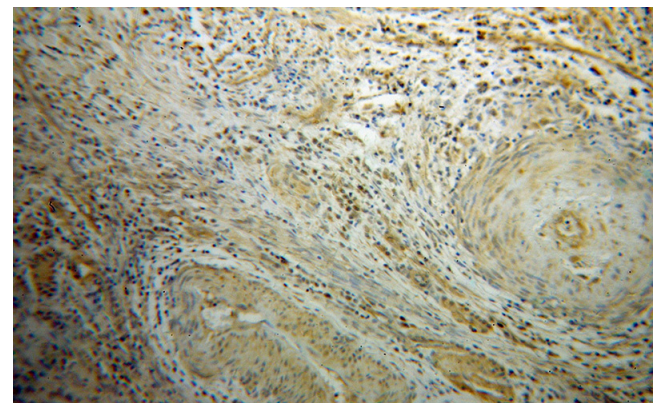
Rabbit IgG

## Applications

ELISA, WB, IHC, IP, IF

## Dilutions

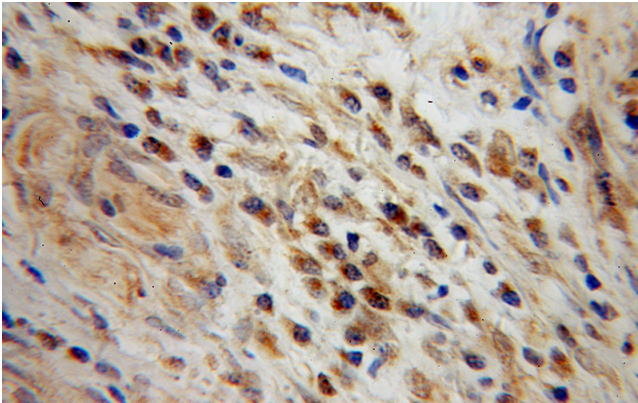
Recommended Dilution:



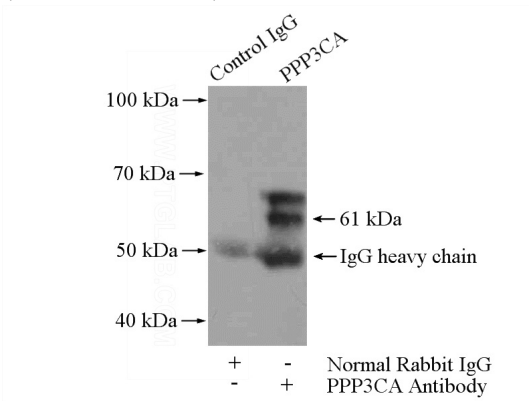
Immunohistochemical of paraffin-embedded human cervical cancer using Catalog No:114108(PPP3CA antibody) at dilution of 1:100 (under 10x lens)

# PPP3CA antibody

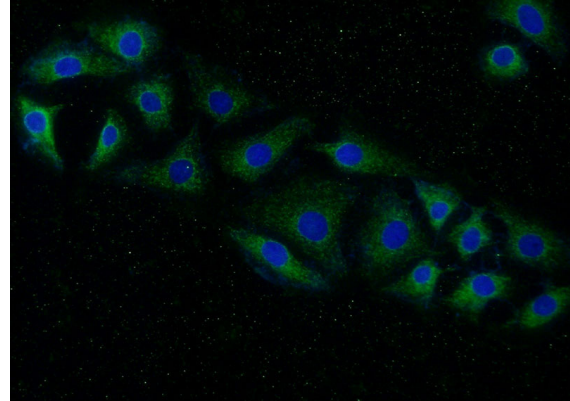
Catalog Number: 114108



Immunohistochemical of paraffin-embedded human cervical cancer using Catalog No:114108(PPP3CA antibody) at dilution of 1:100 (under 40x lens)



IP Result of anti-PPP3CA (IP:Catalog No:114108, 4ug; Detection:Catalog No:114108 1:1000) with mouse heart tissue lysate 4400ug.



Immunofluorescent analysis of (-20oc Ethanol) fixed SH-SY5Y cells using Catalog No:114108(PPP3CA Antibody) at dilution of 1:50 and Alexa Fluor 488-conjugated AffiniPure Goat Anti-Rabbit IgG(H+L)