

PPP1R8 antibody



Catalog Number: 114092

Product name

PPP1R8 antibody

IHC: 1:20-1:200

IF: 1:50-1:500

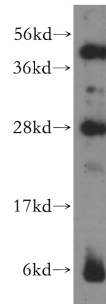
Specificity

Human, Mouse, Rat; other species not tested.

Antibody description

PPP1R8 Rabbit Polyclonal antibody. Positive IHC detected in human kidney tissue, human spleen tissue, human testis tissue. Positive IF detected in HepG2 cells. Positive WB detected in PC-3 cells, HepG2 cells. Observed molecular weight by Western-blot: 47 kDa, 28 kDa, 19 kDa

Validations



Preparation

This antibody was obtained by immunization of PPP1R8 recombinant protein (Accession Number: NM_138558). Purification method: Antigen affinity purified.

PC-3 cells were subjected to SDS PAGE followed by western blot with Catalog No:114092(PPP1R8 antibody) at dilution of 1:300

Formulation

PBS with 0.02% sodium azide and 50% glycerol pH 7.3.

Storage

Store at -20°C. DO NOT ALIQUOT

Clonality

Polyclonal

Ig Type

Rabbit IgG

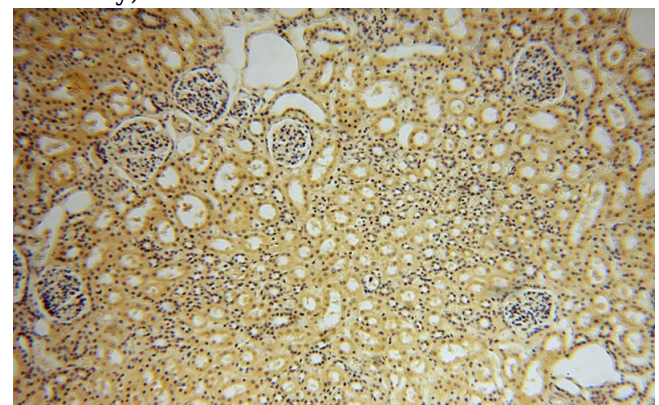
Applications

ELISA, WB, IHC, IF

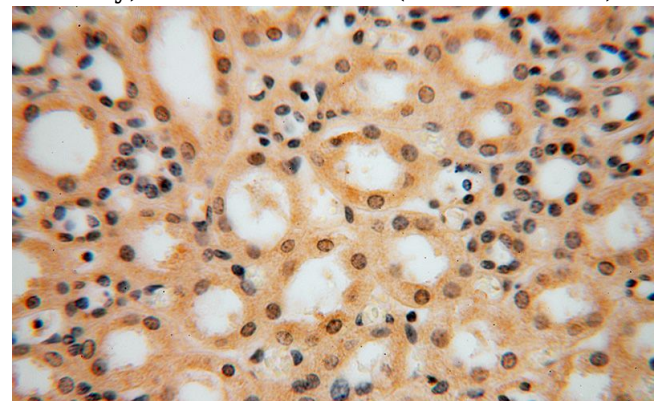
Dilutions

Recommended Dilution:

WB: 1:200-1:2000



Immunohistochemical of paraffin-embedded human kidney using Catalog No:114092(PPP1R8 antibody) at dilution of 1:50 (under 10x lens)



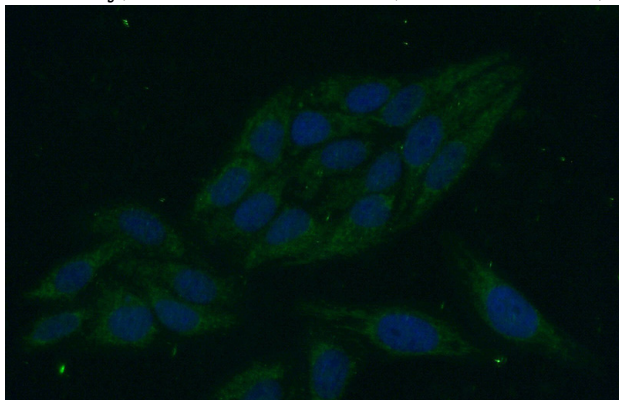
Immunohistochemical of paraffin-embedded human kidney using Catalog No:114092(PPP1R8 antibody) at dilution of 1:50 (under 10x lens)

PPP1R8 antibody



Catalog Number: 114092

antibody) at dilution of 1:50 (under 40x lens)



Immunofluorescent analysis of (-20oc Ethanol)
fixed HepG2 cells using Catalog
No:114092(PPP1R8 Antibody) at dilution of 1:50
and Alexa Fluor 488-conjugated AffiniPure Goat
Anti-Rabbit IgG(H+L)