

PPAPDC3 antibody

Catalog Number: 114080

Product name

PPAPDC3 antibody

Specificity

Human, Mouse, Rat; other species not tested.

Antibody description

PPAPDC3 Rabbit Polyclonal antibody. Positive IP detected in mouse skeletal muscle tissue. Positive WB detected in mouse skeletal muscle tissue. Observed molecular weight by Western-blot: 29 kDa

Preparation

This antibody was obtained by immunization of PPAPDC3 recombinant protein (Accession Number: NM_032728). Purification method: Antigen affinity purified.

Formulation

PBS with 0.02% sodium azide and 50% glycerol pH 7.3.

Storage

Store at -20°C. DO NOT ALIQUOT

Clonality

Polyclonal

Ig Type

Rabbit IgG

Applications

ELISA, WB, IP

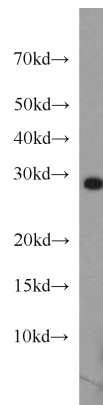
Dilutions

Recommended Dilution:

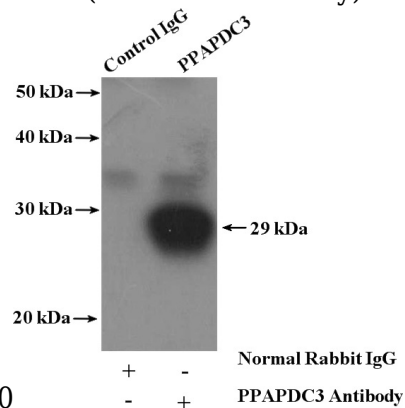
WB: 1:200-1:2000

IP: 1:200-1:2000

Validations



mouse skeletal muscle tissue were subjected to SDS PAGE followed by western blot with Catalog No:114080(PPAPDC3 antibody) at dilution of



IP Result of anti-PPAPDC3 (IP:Catalog No:114080, 4ug; Detection:Catalog No:114080 1:800) with mouse skeletal muscle tissue lysate 4000ug.