

PPA1 antibody

Catalog Number: 114077

Product name

PPA1 antibody

Specificity

Human, Mouse, Rat; other species not tested.

Antibody description

PPA1 Rabbit Polyclonal antibody. Positive WB detected in human heart tissue, human liver tissue. Positive IHC detected in human breast cancer tissue, human heart tissue. Observed molecular weight by Western-blot: 33 kDa

Preparation

This antibody was obtained by immunization of PPA1 recombinant protein (Accession Number: NM_021129). Purification method: Antigen affinity purified.

Formulation

PBS with 0.02% sodium azide and 50% glycerol pH 7.3.

Storage

Store at -20°C. DO NOT ALIQUOT

Clonality

Polyclonal

Ig Type

Rabbit IgG

Applications

ELISA, WB, IHC

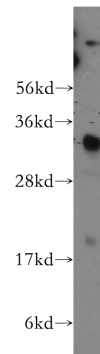
Dilutions

Recommended Dilution:

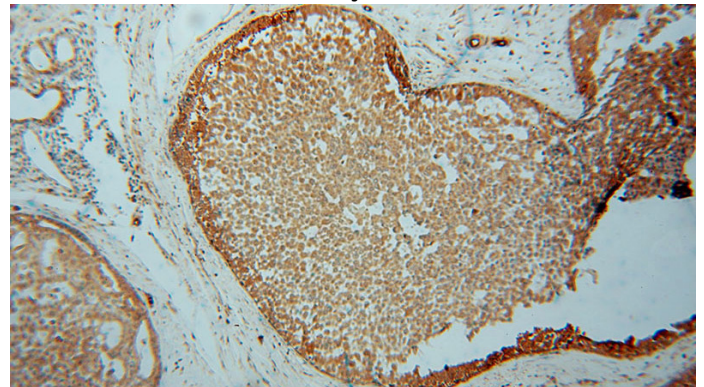
WB: 1:500-1:5000

IHC: 1:20-1:200

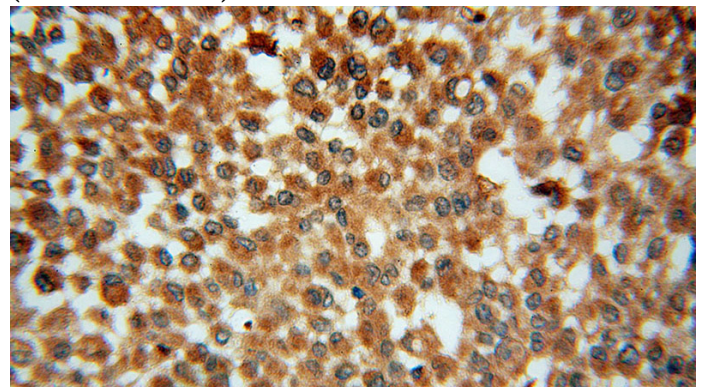
Validations



human heart tissue were subjected to SDS PAGE followed by western blot with Catalog No:114077(PPA1 antibody) at dilution of 1:500



Immunohistochemical of paraffin-embedded human breast cancer using Catalog No:114077(PPA1 antibody) at dilution of 1:50 (under 10x lens)



Immunohistochemical of paraffin-embedded human breast cancer using Catalog No:114077(PPA1 antibody) at dilution of 1:50

PPA1 antibody



Catalog Number: 114077

(under 40x lens)