

# POP7 antibody



Catalog Number: 114062

## Product name

POP7 antibody

## Specificity

Human; other species not tested.

## Antibody description

POP7 Rabbit Polyclonal antibody. Positive WB detected in HeLa cells. Positive IP detected in HeLa cells. Observed molecular weight by Western-blot: 20 kDa

## Preparation

This antibody was obtained by immunization of POP7 recombinant protein (Accession Number: NM\_005837). Purification method: Antigen affinity purified.

## Formulation

PBS with 0.02% sodium azide and 50% glycerol pH 7.3.

## Storage

Store at -20°C. DO NOT ALIQUOT

## Clonality

Polyclonal

## Ig Type

Rabbit IgG

## Applications

ELISA, WB, IP

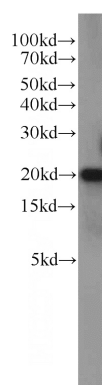
## Dilutions

Recommended Dilution:

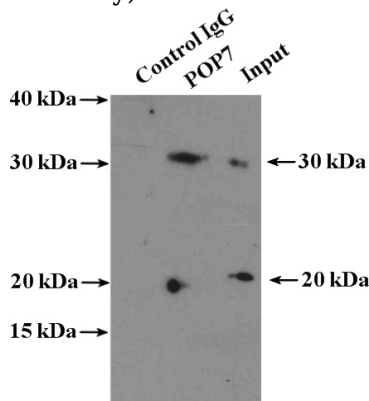
WB: 1:200-1:2000

IP: 1:200-1:2000

## Validations



HeLa cells were subjected to SDS PAGE followed by western blot with Catalog No:114062(POP7 antibody) at dilution of 1:600



IP Result of anti-POP7 (IP:Catalog No:114062, 4ug; Detection:Catalog No:114062 1:500) with HeLa cells lysate 3200ug.