

# POLR2H antibody



Catalog Number: 114043

## Product name

POLR2H antibody

## Specificity

Human, Mouse, Rat; other species not tested.

## Antibody description

POLR2H Rabbit Polyclonal antibody. Positive IHC detected in human breast cancer tissue. Positive WB detected in HL-60 cells, HeLa cells, MCF7 cells, mouse kidney tissue, mouse liver tissue, rat liver tissue. Observed molecular weight by Western-blot: 17kd

## Preparation

This antibody was obtained by immunization of POLR2H recombinant protein (Accession Number: NM\_001389583). Purification method: Antigen affinity purified.

## Formulation

PBS with 0.02% sodium azide and 50% glycerol pH 7.3.

## Storage

Store at -20°C. DO NOT ALIQUOT

## Clonality

Polyclonal

## Ig Type

Rabbit IgG

## Applications

ELISA, WB, IHC

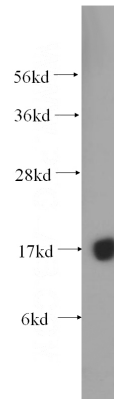
## Dilutions

Recommended Dilution:

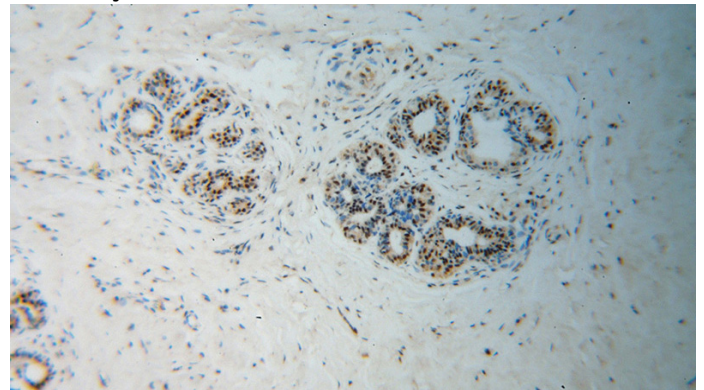
WB: 1:500-1:5000

IHC: 1:20-1:200

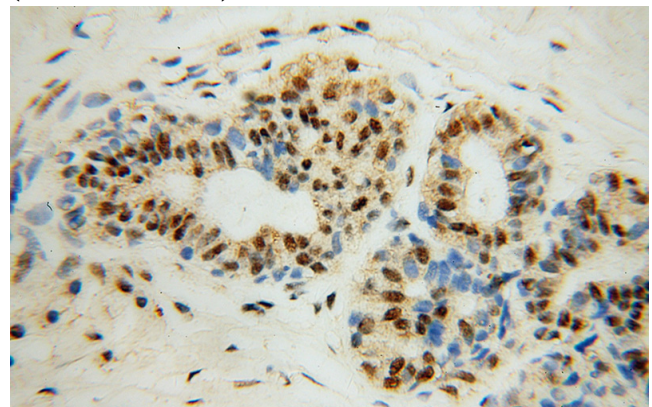
## Validations



HL-60 cells were subjected to SDS PAGE followed by western blot with Catalog No:114043(POLR2H antibody) at dilution of 1:400



Immunohistochemical of paraffin-embedded human breast cancer using Catalog No:114043(POLR2H antibody) at dilution of 1:100 (under 10x lens)



Immunohistochemical of paraffin-embedded human breast cancer using Catalog No:114043(POLR2H antibody) at dilution of 1:100

# POLR2H antibody



Catalog Number: 114043

---

(under 40x lens)