

# POLR2D antibody

Catalog Number: 114041

## Product name

POLR2D antibody

## Specificity

Human, Mouse, Rat; other species not tested.

## Antibody description

POLR2D Rabbit Polyclonal antibody. Positive WB detected in mouse heart tissue, HeLa cells, HepG2 cells, MCF7 cells, rat liver tissue, rat skeletal muscle tissue. Positive IP detected in mouse heart tissue. Observed molecular weight by Western-blot: 16-20 kDa

## Preparation

This antibody was obtained by immunization of POLR2D recombinant protein (Accession Number: NM\_004805). Purification method: Antigen affinity purified.

## Formulation

PBS with 0.02% sodium azide and 50% glycerol pH 7.3.

## Storage

Store at -20°C. DO NOT ALIQUOT

## Clonality

Polyclonal

## Ig Type

Rabbit IgG

## Applications

ELISA, WB, IP

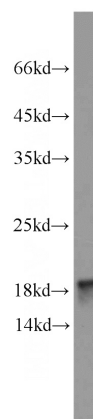
## Dilutions

Recommended Dilution:

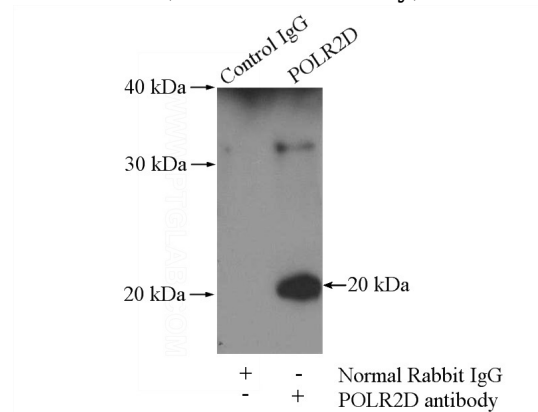
WB: 1:200-1:2000

IP: 1:200-1:2000

## Validations



mouse heart tissue were subjected to SDS PAGE followed by western blot with Catalog No:114041(POLR2D antibody) at dilution of 1:800



IP Result of anti-POLR2D (IP:Catalog No:114041, 4ug; Detection:Catalog No:114041 1:800) with mouse heart tissue lysate 4000ug.