

POLR2C antibody



Catalog Number: 114040

Product name

POLR2C antibody

IP: 1:200-1:2000

IHC: 1:20-1:200

Specificity

Human, Mouse, Rat; other species not tested.

Antibody description

POLR2C Rabbit Polyclonal antibody. Positive IP detected in HeLa cells. Positive WB detected in human kidney tissue, HeLa cells, mouse kidney tissue. Positive IHC detected in human cervical cancer tissue. Observed molecular weight by Western-blot: 33 kDa

Preparation

This antibody was obtained by immunization of POLR2C recombinant protein (Accession Number: NM_032940). Purification method: Antigen affinity purified.

Formulation

PBS with 0.02% sodium azide and 50% glycerol pH 7.3.

Storage

Store at -20°C. DO NOT ALIQUOT

Clonality

Polyclonal

Ig Type

Rabbit IgG

Applications

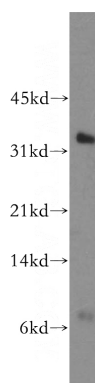
ELISA, WB, IHC, IP

Dilutions

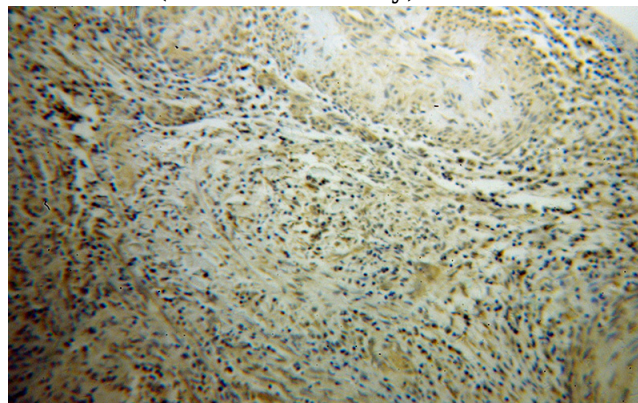
Recommended Dilution:

WB: 1:500-1:5000

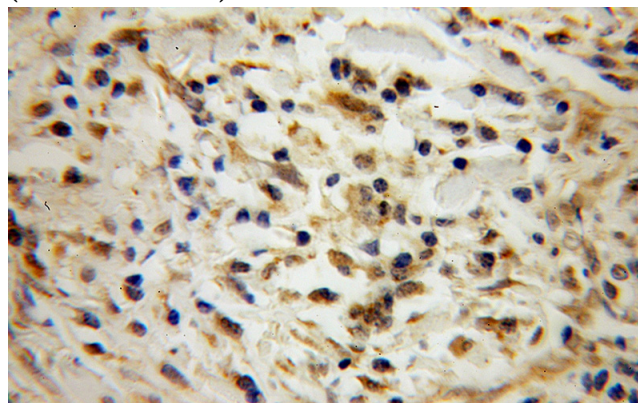
Validations



human kidney tissue were subjected to SDS PAGE followed by western blot with Catalog No:114040(POLR2C antibody) at dilution of 1:500



Immunohistochemical of paraffin-embedded human cervical cancer using Catalog No:114040(POLR2C antibody) at dilution of 1:100 (under 10x lens)



Immunohistochemical of paraffin-embedded

POLR2C antibody

Catalog Number: 114040

human cervical cancer using Catalog No:114040(POLR2C antibody) at dilution of 1:100 (under 40x lens)

IP Result of anti-POLR2C (IP:Catalog No:114040, 4ug; Detection:Catalog No:114040 1:500) with HeLa cells lysate 2000ug.

