

POLR1D antibody



Catalog Number: 114036

Product name

POLR1D antibody

Specificity

Human, Mouse, Rat; other species not tested.

Antibody description

POLR1D Rabbit Polyclonal antibody. Positive IF detected in HepG2 cells. Positive WB detected in Jurkat cells, HeLa cells, HepG2 cells. Observed molecular weight by Western-blot: 16 kDa

Preparation

This antibody was obtained by immunization of POLR1D recombinant protein (Accession Number: XM_005266412). Purification method: Antigen affinity purified.

Formulation

PBS with 0.1% sodium azide and 50% glycerol pH 7.3.

Storage

Store at -20°C. DO NOT ALIQUOT

Clonality

Polyclonal

Ig Type

Rabbit IgG

Applications

ELISA, WB, IF

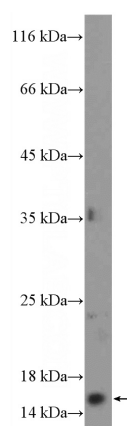
Dilutions

Recommended Dilution:

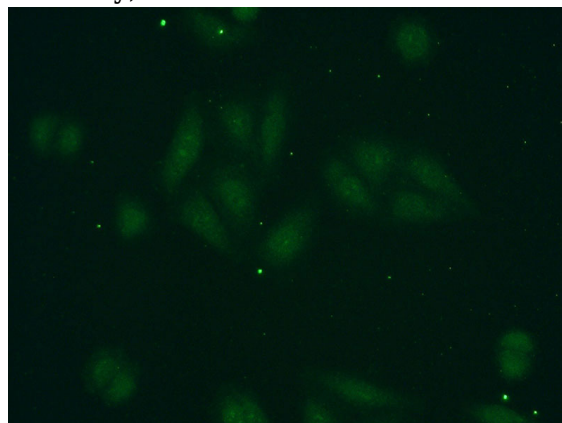
WB: 1:200-1:2000

IF: 1:20-1:200

Validations



Jurkat cells were subjected to SDS PAGE followed by western blot with Catalog No:114036(POLR1D Antibody) at dilution of 1:600



Immunofluorescent analysis of HepG2 cells using Catalog No:114036(POLR1D Antibody) at dilution of 1:50 and Alexa Fluor 488-conjugated AffiniPure Goat Anti-Rabbit IgG(H+L)