

POLR1C antibody



Catalog Number: 114035

Product name

POLR1C antibody

Recommended Dilution:

WB: 1:200-1:2000

Specificity

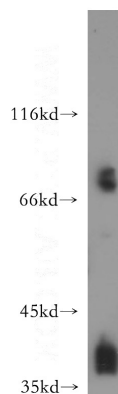
Human, Mouse, Rat; other species not tested.

IHC: 1:20-1:200

Antibody description

POLR1C Rabbit Polyclonal antibody. Positive IHC detected in human ovary tissue, human heart tissue, human kidney tissue, human liver tissue, human placenta tissue, human skin tissue, human spleen tissue, human testis tissue. Positive WB detected in HEK-293 cells, BxPC-3 cells, K-562 cells, SW 1990 cells. Observed molecular weight by Western-blot: 39kd

Validations



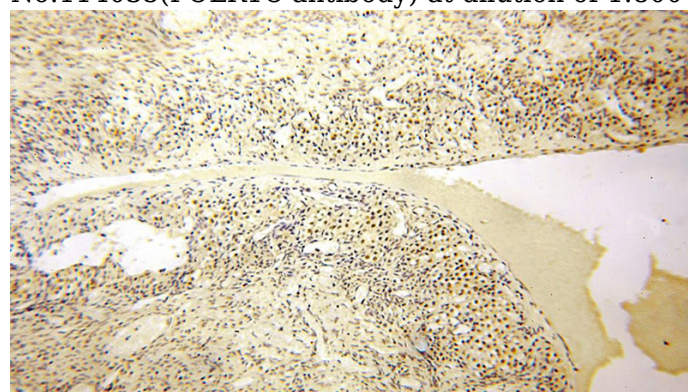
Preparation

This antibody was obtained by immunization of POLR1C recombinant protein (Accession Number: NM_203290). Purification method: Antigen affinity purified.

HEK-293 cells were subjected to SDS PAGE followed by western blot with Catalog No:114035(POLR1C antibody) at dilution of 1:800

Formulation

PBS with 0.02% sodium azide and 50% glycerol pH 7.3.



Storage

Store at -20°C. DO NOT ALIQUOT

Clonality

Polyclonal

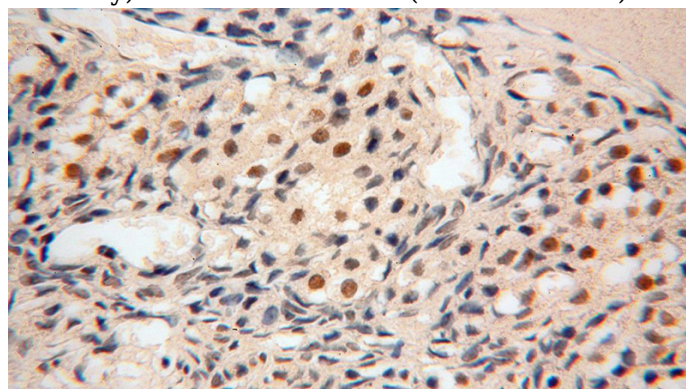
Ig Type

Rabbit IgG

Applications

ELISA, WB, IHC

Immunohistochemical of paraffin-embedded human ovary using Catalog No:114035(POLR1C antibody) at dilution of 1:200 (under 10x lens)



Dilutions

Immunohistochemical of paraffin-embedded

POLR1C antibody



Catalog Number: 114035

human ovary using Catalog No:114035(POLR1C antibody) at dilution of 1:200 (under 40x lens)