

# PMEPA1 antibody



Catalog Number: 114021

## Product name

PMEPA1 antibody

IHC: 1:20-1:200

IF: 1:10-1:100

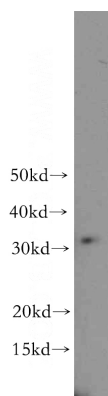
## Specificity

Human, Mouse, Rat; other species not tested.

## Validations

## Antibody description

PMEPA1 Rabbit Polyclonal antibody. Positive WB detected in PC-3 cells. Positive IF detected in PC-3 cells. Positive IHC detected in human prostate hyperplasia tissue. Observed molecular weight by Western-blot: 32 kDa



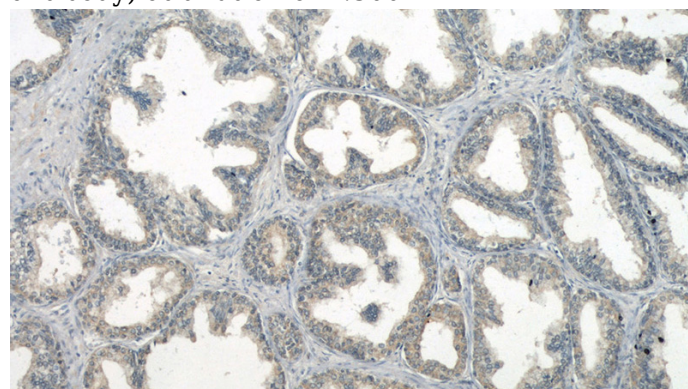
## Preparation

This antibody was obtained by immunization of PMEPA1 recombinant protein (Accession Number: BC015918). Purification method: Antigen affinity purified.

PC-3 cells were subjected to SDS PAGE followed by western blot with Catalog No:114021(PMEPA1 antibody) at dilution of 1:300

## Formulation

PBS with 0.02% sodium azide and 50% glycerol pH 7.3.



## Storage

Store at -20°C. DO NOT ALIQUOT

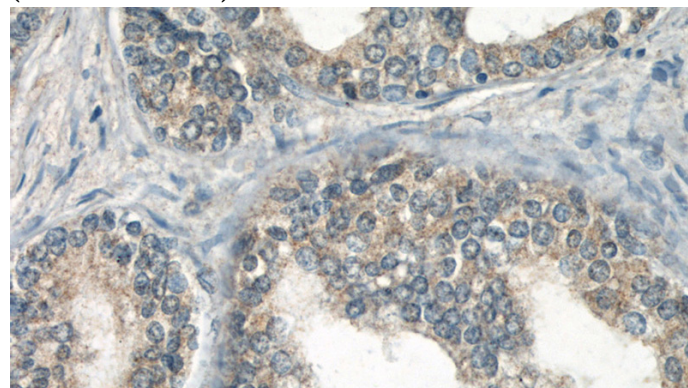
## Clonality

Polyclonal

Immunohistochemical of paraffin-embedded human prostate hyperplasia using Catalog No:114021(PMEPA1 antibody) at dilution of 1:50 (under 10x lens)

## Ig Type

Rabbit IgG



## Applications

ELISA, WB, IHC, IF

## Dilutions

Recommended Dilution:

WB: 1:200-1:1000

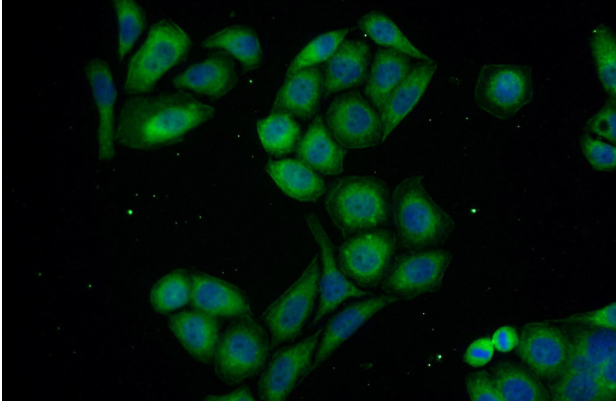
Immunohistochemical of paraffin-embedded

# PMEPA1 antibody

Catalog Number: 114021

---

human prostate hyperplasia using Catalog No:114021(PMEPA1 antibody) at dilution of 1:50 (under 40x lens)



Immunofluorescent analysis of PC-3 cells using Catalog No:114021(PMEPA1 Antibody) at dilution of 1:25 and Alexa Fluor 488-conjugated AffiniPure Goat Anti-Rabbit IgG(H+L)