

PLUNC antibody

Catalog Number: 114015

Product name

PLUNC antibody

IP: 1:200-1:1000

IHC: 1:50-1:500

Specificity

Human, Mouse; other species not tested.

Antibody description

PLUNC Rabbit Polyclonal antibody. Positive IHC detected in mouse lung tissue, human lung cancer tissue. Positive IP detected in mouse lung tissue. Positive WB detected in Transfected HEK-293 cells.

Preparation

This antibody was obtained by immunization of PLUNC recombinant protein (Accession Number: NM_001243193). Purification method: Antigen affinity purified.

Formulation

PBS with 0.1% sodium azide and 50% glycerol pH 7.3.

Storage

Store at -20°C. DO NOT ALIQUOT

Clonality

Polyclonal

Ig Type

Rabbit IgG

Applications

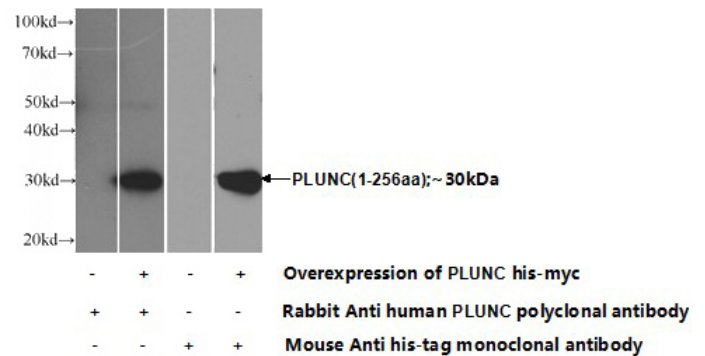
ELISA, WB, IHC, IP

Dilutions

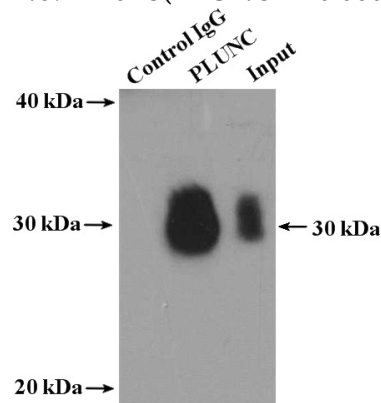
Recommended Dilution:

WB: 1:500-1:5000

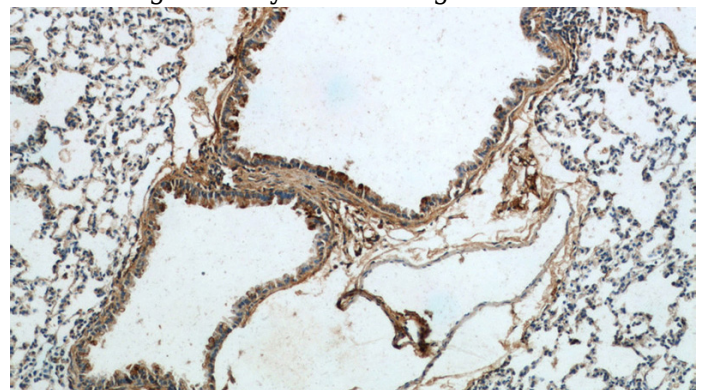
Validations



Transfected HEK-293 cells were subjected to SDS PAGE followed by western blot with Catalog No:114015(PLUNC Antibody) at dilution of 1:1000



IP Result of anti-PLUNC (IP:Catalog No:114015, 4ug; Detection:Catalog No:114015 1:300) with mouse lung tissue lysate 3600ug.

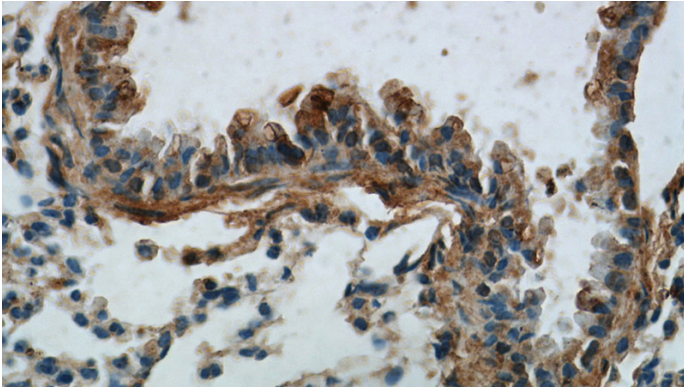


Immunohistochemistry of paraffin-embedded mouse lung tissue slide using Catalog No:114015(PLUNC Antibody) at dilution of 1:100

PLUNC antibody

Catalog Number: 114015

(under 10x lens).



Immunohistochemistry of paraffin-embedded mouse lung tissue slide using Catalog No:114015(PLUNC Antibody) at dilution of 1:100 (under 40x lens).