

# PLSCR1 antibody



Catalog Number: 114012

## Product name

PLSCR1 antibody

## Specificity

Human, Mouse, Rat; other species not tested.

## Antibody description

PLSCR1 Rabbit Polyclonal antibody. Positive IHC detected in human pancreas cancer tissue, human kidney tissue, human pancreas tissue, human spleen tissue. Positive IF detected in HeLa cells. Positive FC detected in HeLa cells. Positive WB detected in human skeletal muscle tissue, HEK-293 cells, human lung tissue, mouse lung tissue, mouse skeletal muscle tissue. Positive IP detected in mouse lung tissue. Observed molecular weight by Western-blot: 35 kDa

## Preparation

This antibody was obtained by immunization of PLSCR1 recombinant protein (Accession Number: NM\_021105). Purification method: Antigen affinity purified.

## Formulation

PBS with 0.1% sodium azide and 50% glycerol pH 7.3.

## Storage

Store at -20°C. DO NOT ALIQUOT

## Clonality

Polyclonal

## Ig Type

Rabbit IgG

## Applications

ELISA, WB, IHC, FC, IF, IP

## Dilutions

Recommended Dilution:

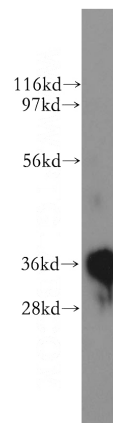
WB: 1:1000-1:10000

IP: 1:200-1:2000

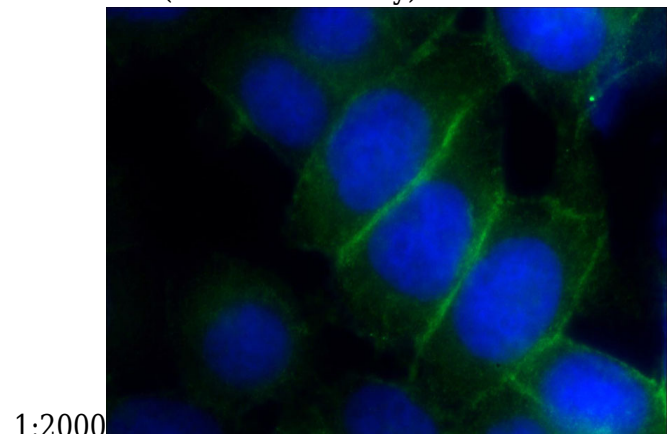
IHC: 1:20-1:200

IF: 1:20-1:200

## Validations



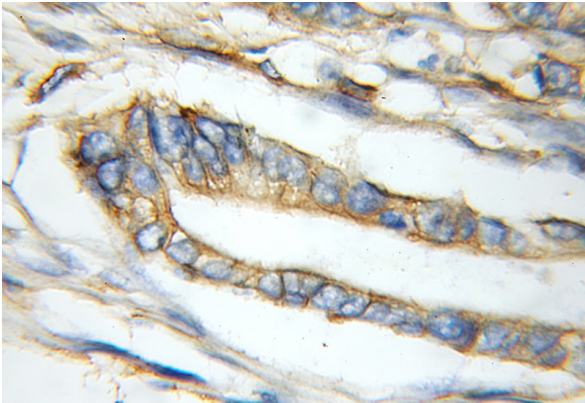
human skeletal muscle tissue were subjected to SDS PAGE followed by western blot with Catalog No:114012(PLSCR1 antibody) at dilution of



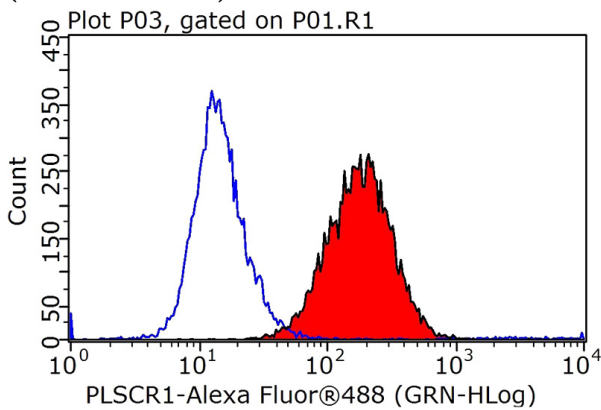
Immunofluorescent analysis of HeLa cells using Catalog No:114012(PLSCR1 Antibody) at dilution of 1:50 and Alexa Fluor 488-conjugated AffiniPure Goat Anti-Rabbit IgG(H+L)

# PLSCR1 antibody

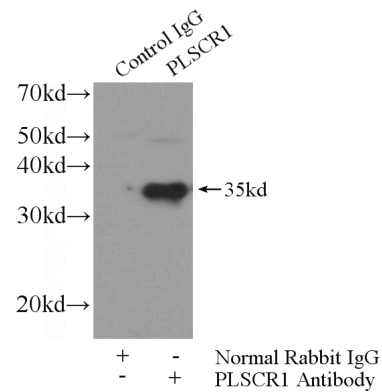
Catalog Number: 114012



Immunohistochemical of paraffin-embedded human pancreas cancer using Catalog No:114012(PLSCR1 antibody) at dilution of 1:100 (under 10x lens)



1X10<sup>6</sup> HeLa cells were stained with 0.2ug PLSCR1 antibody (Catalog No:114012, red) and control antibody (blue). Fixed with 90% MeOH blocked with 3% BSA (30 min). Alexa Fluor 488-conjugated AffiniPure Goat Anti-Rabbit IgG(H+L) with dilution 1:1000.



IP Result of anti-PLSCR1 (IP:Catalog No:114012, 4ug; Detection:Catalog No:114012 1:500) with mouse lung tissue lysate 2800ug.