

# PLP2 antibody

Catalog Number: 114007

## Product name

PLP2 antibody

IHC: 1:20-1:200

IF: 1:50-1:500

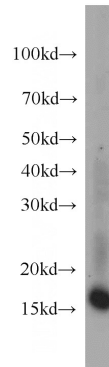
## Specificity

Human; other species not tested.

## Antibody description

PLP2 Rabbit Polyclonal antibody. Positive IF detected in HepG2 cells. Positive IHC detected in human colon tissue. Positive WB detected in HepG2 cells, HEK-293 cells. Observed molecular weight by Western-blot: 15-17 kDa

## Validations



## Preparation

This antibody was obtained by immunization of PLP2 recombinant protein (Accession Number: NM\_002668). Purification method: Antigen affinity purified.

HepG2 cells were subjected to SDS PAGE followed by western blot with Catalog No:114007(PLP2 antibody) at dilution of 1:500

## Formulation

PBS with 0.02% sodium azide and 50% glycerol pH 7.3.

## Storage

Store at -20°C. DO NOT ALIQUOT

## Clonality

Polyclonal

## Ig Type

Rabbit IgG

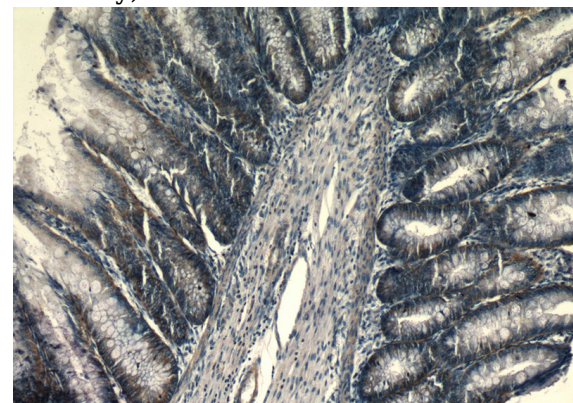
## Applications

ELISA, WB, IHC, IF

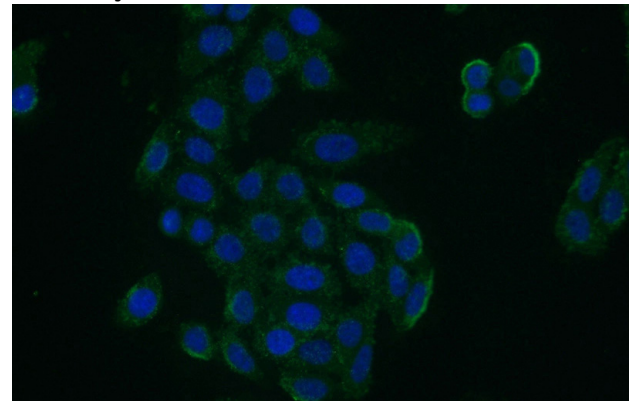
## Dilutions

Recommended Dilution:

WB: 1:500-1:5000



Immunohistochemical of paraffin-embedded human colon using Catalog No:114007(PLP2 antibody) at dilution of 1:50 (under 10x lens)



Immunofluorescent analysis of (-20oc Ethanol) fixed HepG2 cells using Catalog No:114007(PLP2 antibody) at dilution of 1:50

# PLP2 antibody



Catalog Number: 114007

---

Antibody) at dilution of 1:50 and Alexa Fluor 488- conjugated AffiniPure Goat Anti-Rabbit IgG(H+L)