

PLOD3 antibody

Catalog Number: 114006

Product name

PLOD3 antibody

Specificity

Human, Mouse, Rat; other species not tested.

Antibody description

PLOD3 Rabbit Polyclonal antibody. Positive IF detected in HepG2 cells. Positive IHC detected in human pancreas cancer tissue, human kidney tissue, human pancreas tissue. Positive IP detected in HepG2 cells. Positive WB detected in HepG2 cells, A549 cells, HeLa cells, human placenta tissue, mouse placenta tissue, PC-3 cells. Observed molecular weight by Western-blot: 80-85 kDa

Preparation

This antibody was obtained by immunization of PLOD3 recombinant protein (Accession Number: NM_001084). Purification method: Antigen affinity purified.

Formulation

PBS with 0.1% sodium azide and 50% glycerol pH 7.3.

Storage

Store at -20°C. DO NOT ALIQUOT

Clonality

Polyclonal

Ig Type

Rabbit IgG

Applications

ELISA, WB, IHC, IP, IF

Dilutions

Recommended Dilution:

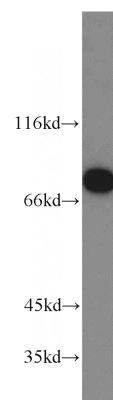
WB: 1:200-1:2000

IP: 1:200-1:2000

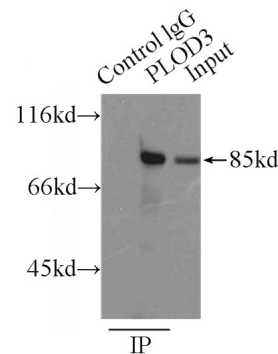
IHC: 1:20-1:200

IF: 1:10-1:100

Validations



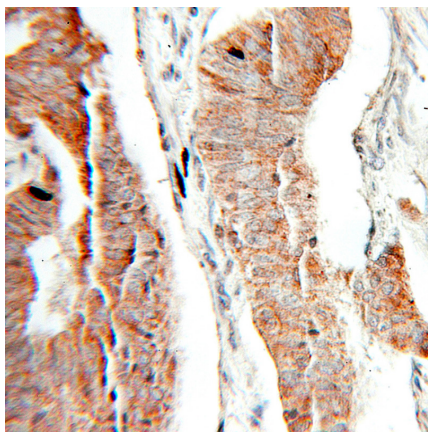
HepG2 cells were subjected to SDS PAGE followed by western blot with Catalog No:114006(PLOD3 antibody) at dilution of 1:800



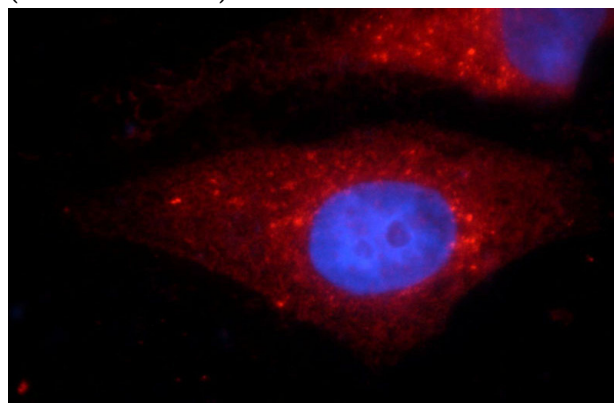
IP Result of anti-PLOD3 (IP:Catalog No:114006, 3ug; Detection:Catalog No:114006 1:500) with HepG2 cells lysate 6000ug.

PLOD3 antibody

Catalog Number: 114006



(under 10x lens)



Immunohistochemical of paraffin-embedded human pancreas cancer using Catalog No:114006(PLOD3 antibody) at dilution of 1:50

Immunofluorescent analysis of HepG2 cells using Catalog No:114006(PLOD3 Antibody) at dilution of 1:25 and Rhodamine-Goat anti-Rabbit IgG