

PLOD2-Specific antibody



Catalog Number: 114005

Product name

PLOD2-Specific antibody

Specificity

Human, Mouse, Rat; other species not tested.

Antibody description

PLOD2-Specific Rabbit Polyclonal antibody. Positive FC detected in HeLa cells. Positive IF detected in Hela cells. Positive IHC detected in human liver cancer tissue, human pancreas tissue, human skeletal muscle tissue. Positive WB detected in DU 145 cells, HT-1080 cells, mouse liver tissue, mouse pancreas tissue, mouse testis tissue. Positive IP detected in mouse testis tissue. Observed molecular weight by Western-blot: 85 kDa

Preparation

This antibody was obtained by immunization of PLOD2-Specific recombinant protein (Accession Number: NM_182943). Purification method: Antigen affinity purified.

Formulation

PBS with 0.02% sodium azide and 50% glycerol pH 7.3.

Storage

Store at -20°C. DO NOT ALIQUOT

Clonality

Polyclonal

Ig Type

Rabbit IgG

Applications

ELISA, WB, IHC, IF, IP, FC

Dilutions

Recommended Dilution:

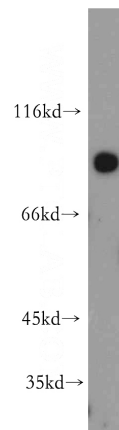
WB: 1:200-1:2000

IP: 1:200-1:2000

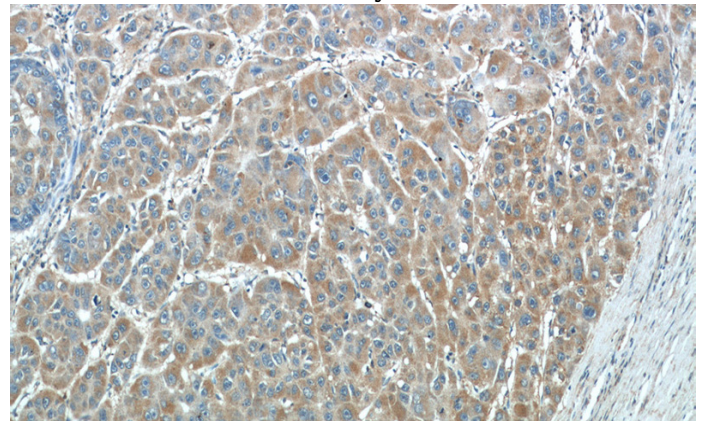
IHC: 1:20-1:200

IF: 1:10-1:100

Validations



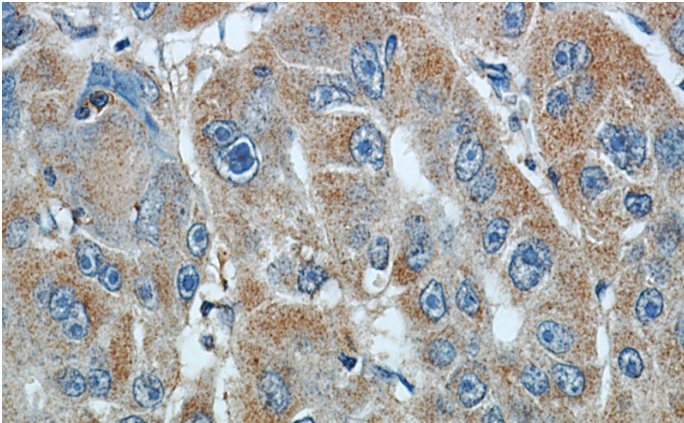
DU 145 cells were subjected to SDS PAGE followed by western blot with Catalog No:114005(PLOD2 antibody) at dilution of 1:300



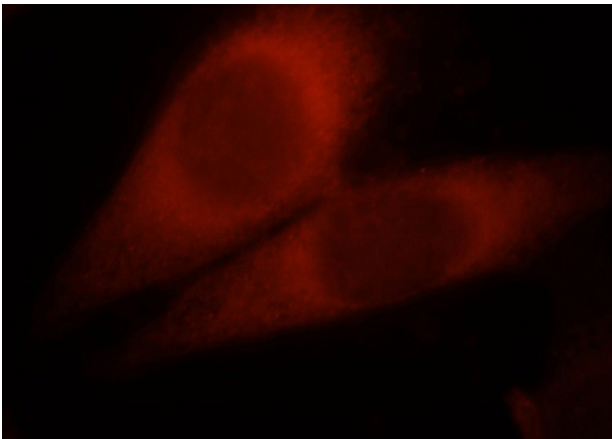
Immunohistochemical of paraffin-embedded human liver cancer using Catalog No:114005(PLOD2 antibody) at dilution of 1:50 (under 10x lens)

PLOD2-Specific antibody

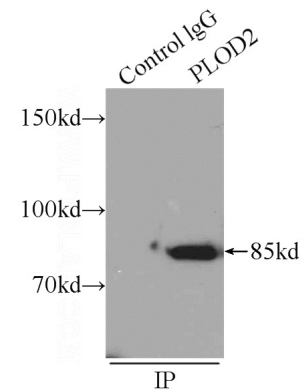
Catalog Number: 114005



Immunohistochemical of paraffin-embedded human liver cancer using Catalog No:114005(PLOD2 antibody) at dilution of 1:50 (under 40x lens)

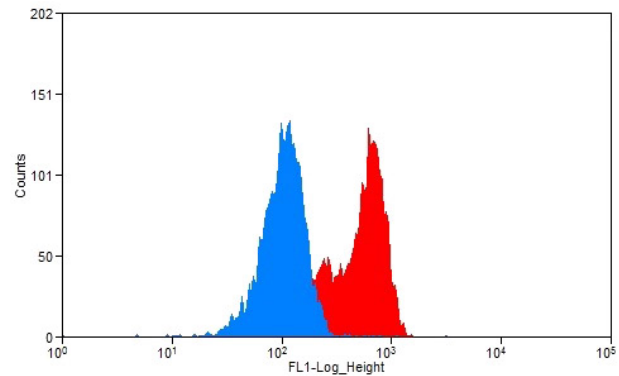


Immunofluorescent analysis of HeLa cells, using PLOD2 antibody Catalog No:114005 at 1:25 dilution and Rhodamine-labeled goat anti-rabbit



IgG (red).

IP Result of anti-PLOD2 (IP:Catalog No:114005, 4ug; Detection:Catalog No:114005 1:500) with mouse testis tissue lysate 5000ug.



1×10^6 HeLa cells were stained with 0.2ug PLOD2 antibody (Catalog No:114005, red) and control antibody (blue). Fixed with 90% MeOH blocked with 3% BSA (30 min). Alexa Fluor 488-conjugated AffiniPure Goat Anti-Rabbit IgG(H+L) with dilution 1:1500.