

# POLI antibody

Catalog Number: 114003

## Product name

POLI antibody

IP: 1:500-1:5000

IHC: 1:20-1:200

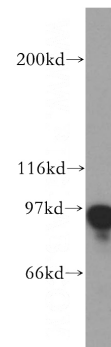
## Specificity

Human, Mouse, Rat; other species not tested.

## Validations

## Antibody description

POLI Rabbit Polyclonal antibody. Positive WB detected in mouse testis tissue, human heart tissue. Positive IP detected in mouse testis tissue. Positive IHC detected in human pancreas cancer tissue. Observed molecular weight by Western-blot: 87 kDa



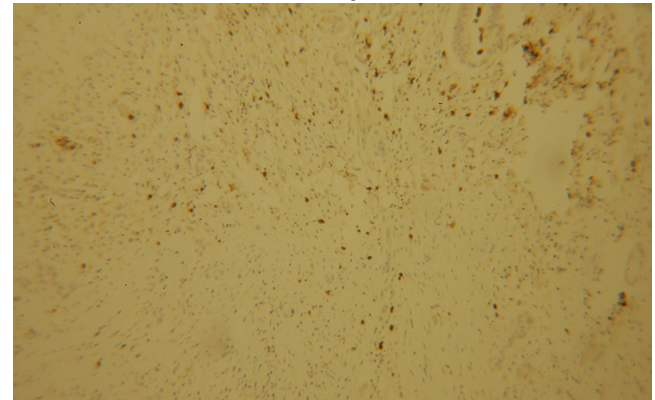
## Preparation

This antibody was obtained by immunization of POLI recombinant protein (Accession Number: NM\_001351632). Purification method: Antigen affinity purified.

mouse testis tissue were subjected to SDS PAGE followed by western blot with Catalog No:114003(POLI antibody) at dilution of 1:800

## Formulation

PBS with 0.02% sodium azide and 50% glycerol pH 7.3.



## Storage

Store at -20°C. DO NOT ALIQUOT

## Clonality

Polyclonal

Immunohistochemical of paraffin-embedded human pancreas cancer using Catalog No:114003(POLI antibody) at dilution of 1:100 (under 10x lens)

## Ig Type

Rabbit IgG

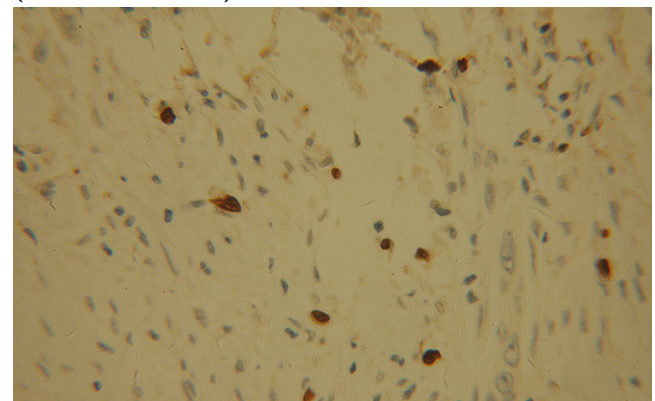
## Applications

ELISA, WB, IHC, IP

## Dilutions

Recommended Dilution:

WB: 1:500-1:5000



Immunohistochemical of paraffin-embedded

# POLI antibody

Catalog Number: 114003

---

human pancreas cancer using Catalog No:114003(POLI antibody) at dilution of 1:100 (under 40x lens)

IP Result of anti-POLI (IP:Catalog No:114003, 4ug; Detection:Catalog No:114003 1:1000) with mouse testis tissue lysate 4000ug.

