

POLE3 antibody



Catalog Number: 114001

Product name

POLE3 antibody

IP: 1:500-1:5000

IHC: 1:20-1:200

Specificity

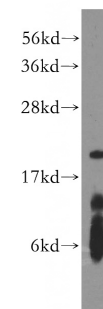
Human, Mouse, Rat; other species not tested.

IF: 1:50-1:500

Validations

Antibody description

POLE3 Rabbit Polyclonal antibody. Positive IF detected in HepG2 cells. Positive IHC detected in human liver cancer tissue. Positive IP detected in HepG2 cells. Positive WB detected in HepG2 cells, MCF7 cells. Observed molecular weight by Western-blot: 19 kDa



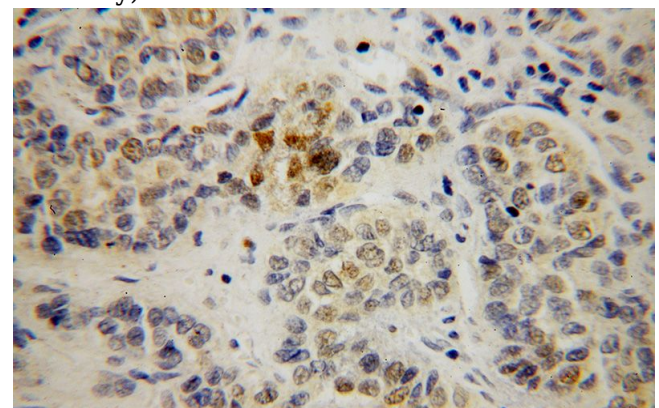
Preparation

This antibody was obtained by immunization of POLE3 recombinant protein (Accession Number: NM_017443). Purification method: Antigen affinity purified.

HepG2 cells were subjected to SDS PAGE followed by western blot with Catalog No:114001(POLE3 antibody) at dilution of 1:1000

Formulation

PBS with 0.02% sodium azide and 50% glycerol pH 7.3.



Storage

Store at -20°C. DO NOT ALIQUOT

Clonality

Polyclonal

Ig Type

Rabbit IgG

Applications

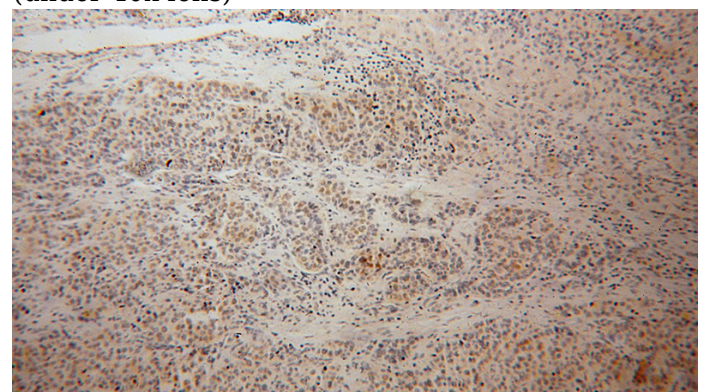
ELISA, WB, IHC, IP, IF

Dilutions

Recommended Dilution:

WB: 1:1000-1:10000

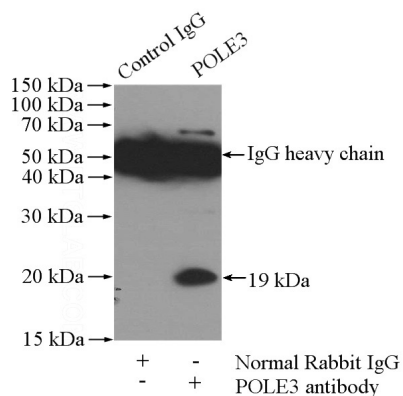
Immunohistochemical of paraffin-embedded human liver cancer using Catalog No:114001(POLE3 antibody) at dilution of 1:100 (under 40x lens)



POLE3 antibody

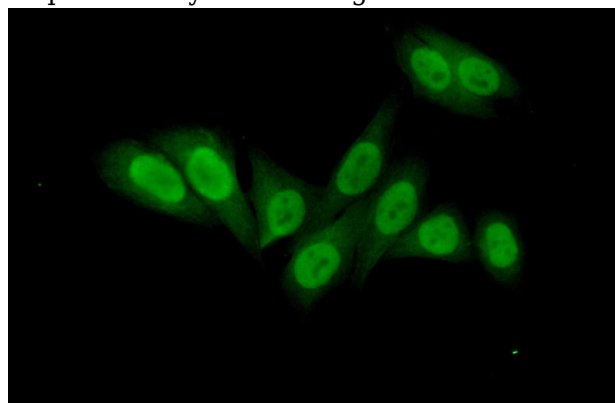
Catalog Number: 114001

Immunohistochemical of paraffin-embedded human liver cancer using Catalog No:114001(POLE3 antibody) at dilution of 1:100 (under 10x lens)



IP Result of anti-POLE3 (IP:Catalog No:114001, 4ug; Detection:Catalog No:114001 1:1000) with

HepG2 cells lysate 1800ug.



Immunofluorescent analysis of (10% Formaldehyde) fixed HepG2 cells using Catalog No:114001(POLE3 Antibody) at dilution of 1:50 and Alexa Fluor 488-conjugated AffiniPure Goat Anti-Rabbit IgG(H+L)