

# POLD3 antibody

Catalog Number: 113999

## Product name

POLD3 antibody

## Specificity

Human, Mouse; other species not tested.

## Antibody description

POLD3 Rabbit Polyclonal antibody. Positive IF detected in MCF-7 cells. Positive IHC detected in human cervical cancer tissue, human breast cancer tissue. Positive IP detected in MCF-7 cells. Positive WB detected in MCF-7 cells, mouse spleen tissue. Observed molecular weight by Western-blot: 51-70 kDa

## Preparation

This antibody was obtained by immunization of POLD3 recombinant protein (Accession Number: BC108908). Purification method: Antigen affinity purified.

## Formulation

PBS with 0.02% sodium azide and 50% glycerol pH 7.3.

## Storage

Store at -20°C. DO NOT ALIQUOT

## Clonality

Polyclonal

## Ig Type

Rabbit IgG

## Applications

ELISA, WB, IP, IF, IHC

## Dilutions

Recommended Dilution:

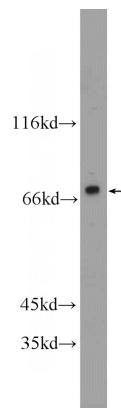
WB: 1:200-1:1000

IP: 1:200-1:1000

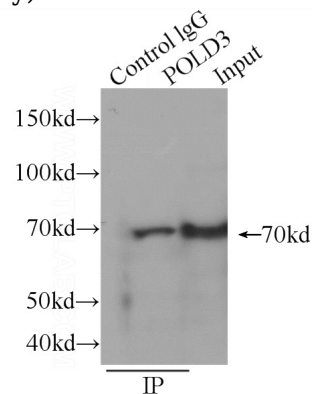
IHC: 1:20-1:200

IF: 1:10-1:100

## Validations



MCF-7 cells were subjected to SDS PAGE followed by western blot with Catalog No:113999(POLD3 Antibody) at dilution of 1:300

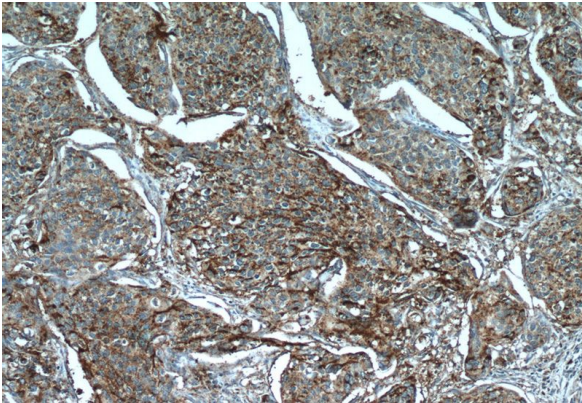


IP Result of anti-POLD3 (IP:Catalog No:113999, 4ug; Detection:Catalog No:113999 1:300) with MCF-7 cells lysate 2560ug.

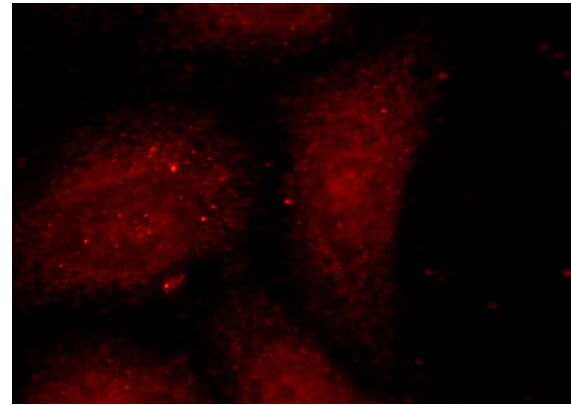
# POLD3 antibody

Catalog Number: 113999

---



Immunohistochemistry of paraffin-embedded human cervical cancer tissue slide using Catalog No:113999(POLD3 Antibody) at dilution of 1:50 (under 40x lens)



Immunofluorescent analysis of MCF-7 cells using Catalog No:113999(POLD3 Antibody) at dilution of 1:25 and Rhodamine-Goat anti-Rabbit IgG

Immunohistochemistry of paraffin-embedded human cervical cancer tissue slide using Catalog No:113999(POLD3 Antibody) at dilution of 1:50 (under 10x lens)

