

POLA2 antibody

Catalog Number: 113996

Product name

POLA2 antibody

Specificity

Human; other species not tested.

Antibody description

POLA2 Rabbit Polyclonal antibody. Positive WB detected in HeLa cells, COLO 320 cells, HepG2 cells, MCF7 cells. Positive IF detected in HeLa cells. Observed molecular weight by Western-blot: 68-70 kDa

Preparation

This antibody was obtained by immunization of POLA2 recombinant protein (Accession Number: NM_002689). Purification method: Antigen affinity purified.

Formulation

PBS with 0.02% sodium azide and 50% glycerol pH 7.3.

Storage

Store at -20°C. DO NOT ALIQUOT

Clonality

Polyclonal

Ig Type

Rabbit IgG

Applications

ELISA, WB, IF

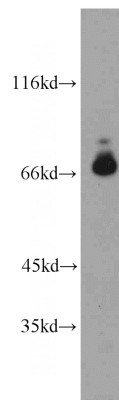
Dilutions

Recommended Dilution:

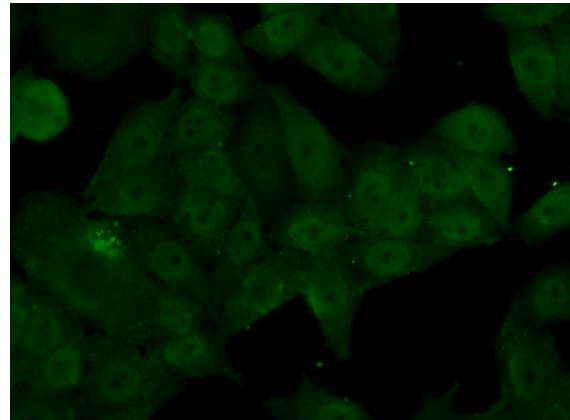
WB: 1:1000-1:10000

IF: 1:50-1:500

Validations



HeLa cells were subjected to SDS PAGE followed by western blot with Catalog No:113996(POLA2 antibody) at dilution of 1:500



Immunofluorescent analysis of (10% Formaldehyde) fixed HeLa cells using Catalog No:113996(POLA2 Antibody) at dilution of 1:50 and Alexa Fluor 488-conjugated AffiniPure Goat Anti-Rabbit IgG(H+L)