

# POFUT1 antibody



Catalog Number: 113993

## Product name

POFUT1 antibody

## Specificity

Human, Mouse, Rat; other species not tested.

## Antibody description

POFUT1 Rabbit Polyclonal antibody. Positive IF detected in A431 cells. Positive IHC detected in human liver cancer tissue, mouse liver tissue. Positive IP detected in HepG2 cells. Positive WB detected in HepG2 cells, human brain tissue, human heart tissue, human kidney tissue, human liver tissue. Observed molecular weight by Western-blot: 44kd

## Preparation

This antibody was obtained by immunization of POFUT1 recombinant protein (Accession Number: NM\_172236). Purification method: Antigen affinity purified.

## Formulation

PBS with 0.02% sodium azide and 50% glycerol pH 7.3.

## Storage

Store at -20°C. DO NOT ALIQUOT

## Clonality

Polyclonal

## Ig Type

Rabbit IgG

## Applications

ELISA, WB, IHC, IF, IP

## Dilutions

Recommended Dilution:

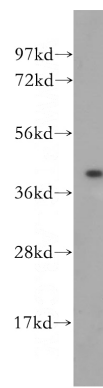
WB: 1:200-1:2000

IP: 1:200-1:2000

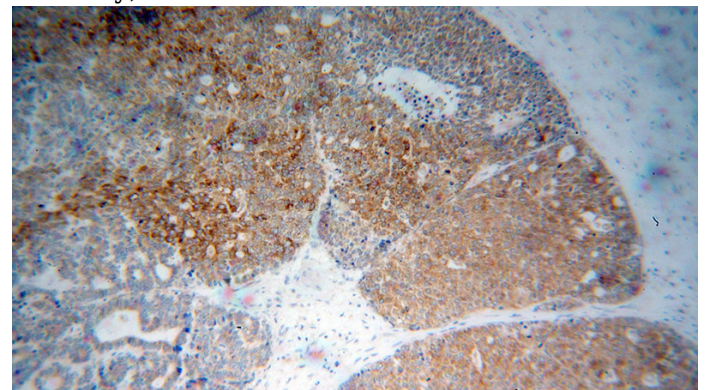
IHC: 1:20-1:200

IF: 1:20-1:200

## Validations



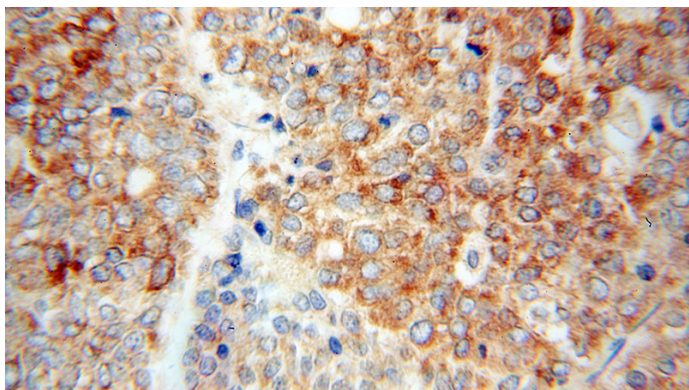
HepG2 cells were subjected to SDS PAGE followed by western blot with Catalog No:113993(POFUT1 antibody) at dilution of 1:500



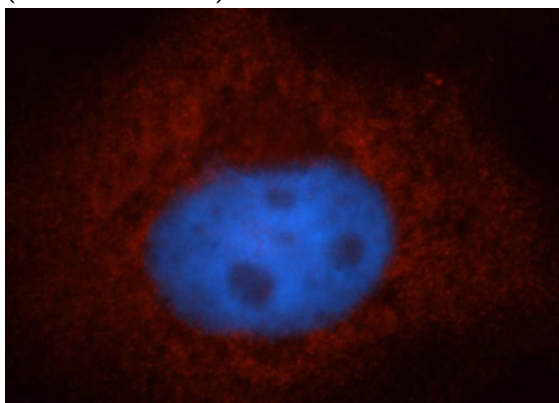
Immunohistochemical of paraffin-embedded human liver cancer using Catalog No:113993(POFUT1 antibody) at dilution of 1:50 (under 10x lens)

# POFUT1 antibody

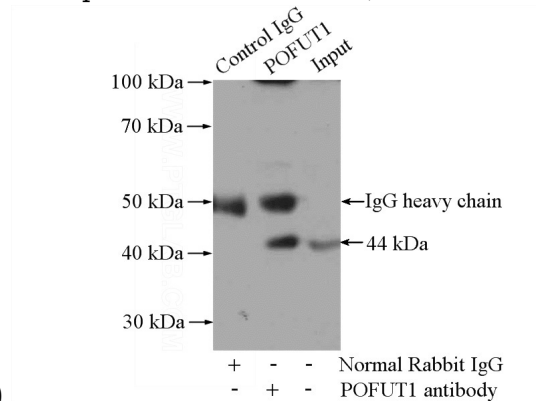
Catalog Number: 113993



Immunohistochemical of paraffin-embedded human liver cancer using Catalog No:113993(POFUT1 antibody) at dilution of 1:50 (under 40x lens)



Immunofluorescent analysis of A431 cells, using POFUT1 antibody Catalog No:113993 at 1:50 dilution and Rhodamine-labeled goat anti-rabbit IgG (red). Blue pseudocolor = DAPI (fluorescent



DNA dye).

IP Result of anti-POFUT1 (IP:Catalog No:113993, 4ug; Detection:Catalog No:113993 1:500) with HepG2 cells lysate 2400ug.