

Podoplanin antibody



Catalog Number: 113989

Product name

Podoplanin antibody

WB: 1:500-1:5000

IHC: 1:20-1:200

Specificity

Human; other species not tested.

Antibody description

Podoplanin Rabbit Polyclonal antibody. Positive FC detected in HUVEC cells. Positive IHC detected in human colon cancer tissue, human lung tissue, human skeletal muscle tissue. Positive WB detected in HEK-293 cells, human placenta tissue, Transfected HEK-293 cells. Observed molecular weight by Western-blot: 43 kDa

Preparation

This antibody was obtained by immunization of Podoplanin recombinant protein (Accession Number: BC022812). Purification method: Antigen affinity purified.

Formulation

PBS with 0.1% sodium azide and 50% glycerol pH 7.3.

Storage

Store at -20°C. DO NOT ALIQUOT

Clonality

Polyclonal

Ig Type

Rabbit IgG

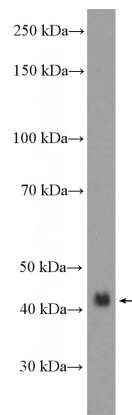
Applications

ELISA, IHC, WB, FC

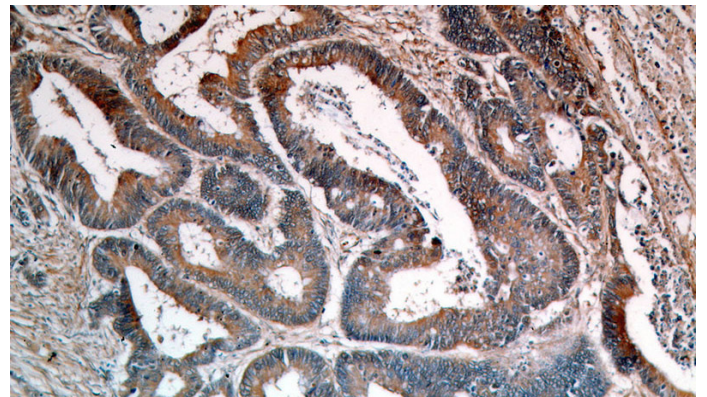
Dilutions

Recommended Dilution:

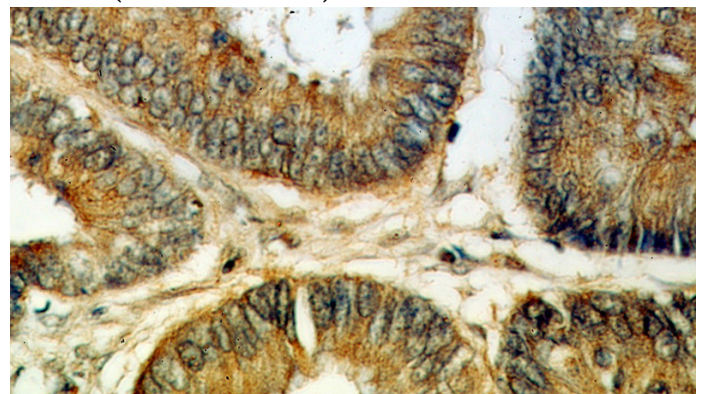
Validations



HEK-293 cells were subjected to SDS PAGE followed by western blot with Catalog No:113989(PDPN,D2-40,M2A Antibody) at dilution of 1:1000



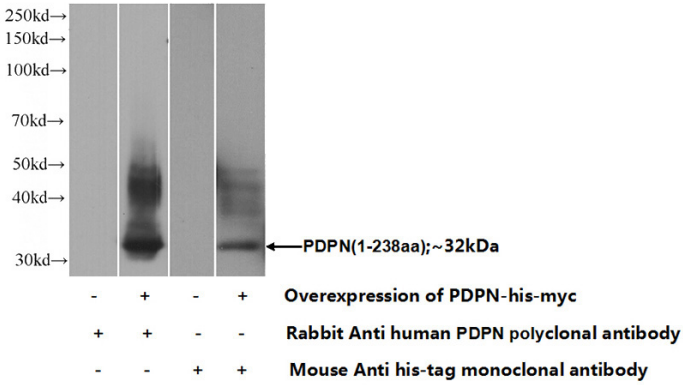
Immunohistochemical of paraffin-embedded human colon cancer using Catalog No:113989(PDPN,D2-40,M2A antibody) at dilution of 1:50 (under 10x lens)



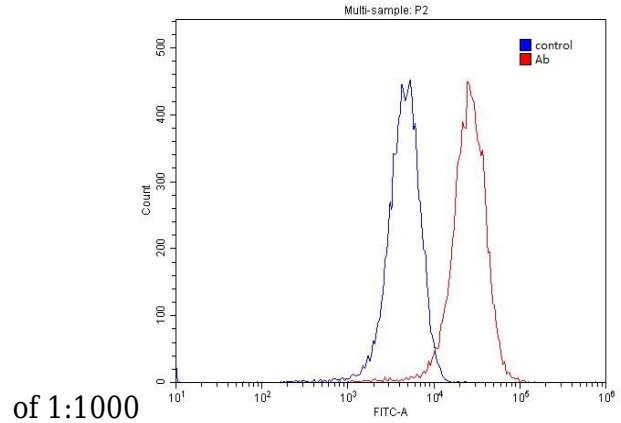
Podoplanin antibody

Catalog Number: 113989

Immunohistochemical of paraffin-embedded human colon cancer using Catalog No:113989(PDPN,D2-40,M2A antibody) at dilution of 1:50 (under 40x lens)



Transfected HEK-293 cells were subjected to SDS PAGE followed by western blot with Catalog No:113989(PDPN,D2-40,M2A Antibody) at dilution



of 1:1000

1X10⁶ HUVEC cells were stained with 0.2ug PDPN,D2-40,M2A antibody (Catalog No:113989, red) and control antibody (blue). Fixed with 4% PFA blocked with 3% BSA (30 min). Alexa Fluor 488-conjugated AffiniPure Goat Anti-Rabbit IgG(H+L) with dilution 1:1500.