

PNPLA6 antibody



Catalog Number: 113982

Product name

PNPLA6 antibody

Specificity

Human, Mouse, Rat; other species not tested.

Antibody description

PNPLA6 Rabbit Polyclonal antibody. Positive IP detected in N/A. Positive WB detected in mouse brain tissue, HEK-293 cells, SH-SY5Y cells. Positive IF detected in HepG2 cells, MCF-7 cells. Observed molecular weight by Western-blot: 150kd

Preparation

This antibody was obtained by immunization of PNPLA6 recombinant protein (Accession Number: NM_001166113). Purification method: Antigen affinity purified.

Formulation

PBS with 0.02% sodium azide and 50% glycerol pH 7.3.

Storage

Store at -20°C. DO NOT ALIQUOT

Clonality

Polyclonal

Ig Type

Rabbit IgG

Applications

ELISA, WB, IF, IP

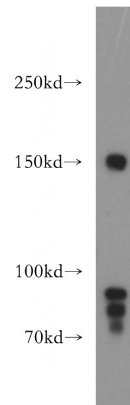
Dilutions

Recommended Dilution:

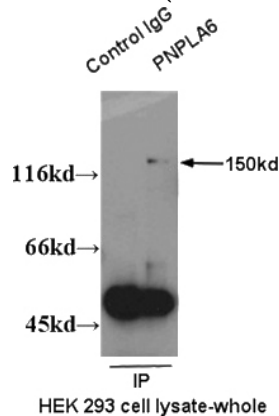
WB: 1:500-1:5000

IP: N/AIF: 1:10-1:100

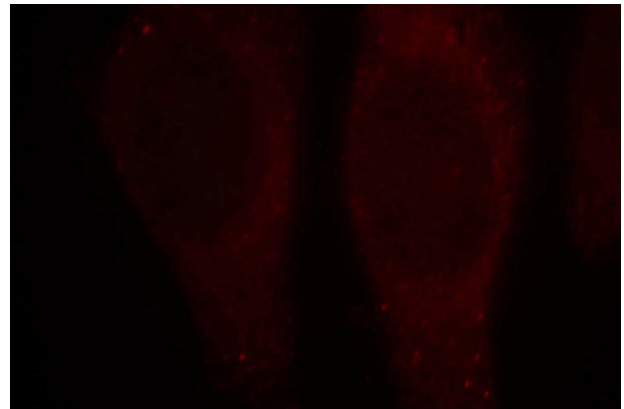
Validations



mouse brain tissue were subjected to SDS PAGE followed by western blot with Catalog No:113982(PNPLA6 antibody) at dilution of 1:500



IP result of anti-PNPLA6 (Catalog No:113982 for IP and Detection) with 293 cell.



Immunofluorescent analysis of HepG2 cells, using PNPLA6 antibody Catalog No:113982 at 1:25 dilution and Rhodamine-labeled goat anti-rabbit IgG (red).