

PLK1-phospho(S326) antibody



Catalog Number: 113968

Product name

PLK1-phospho(S326) antibody

Specificity

Human, Mouse, Rat; other species not tested.

Antibody description

PLK1-phospho(S326) Rabbit Polyclonal antibody.
Positive IHC detected in human colon tissue.
Positive WB detected in MCF-7 cells. Observed molecular weight by Western-blot: 66 kDa

Preparation

This antibody was obtained by immunization of Peptide (Accession Number: NM_005030).
Purification method: Antigen affinity purified.

Formulation

PBS with 0.1% sodium azide and 50% glycerol pH 7.3.

Storage

Store at -20°C. DO NOT ALIQUOT

Clonality

Polyclonal

Ig Type

Rabbit IgG

Applications

ELISA, IHC, WB

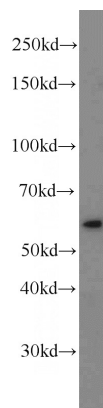
Dilutions

Recommended Dilution:

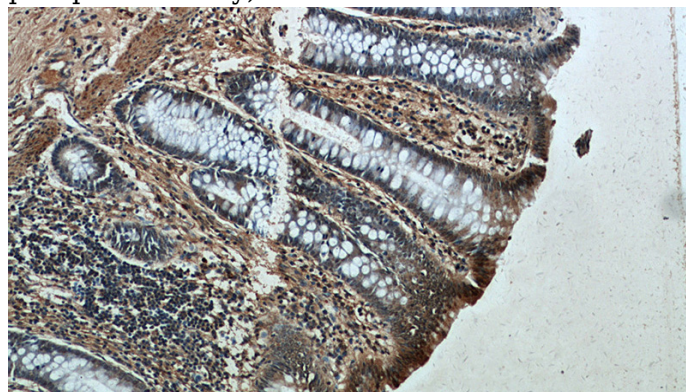
WB: 1:200-1:1000

IHC: 1:20-1:200

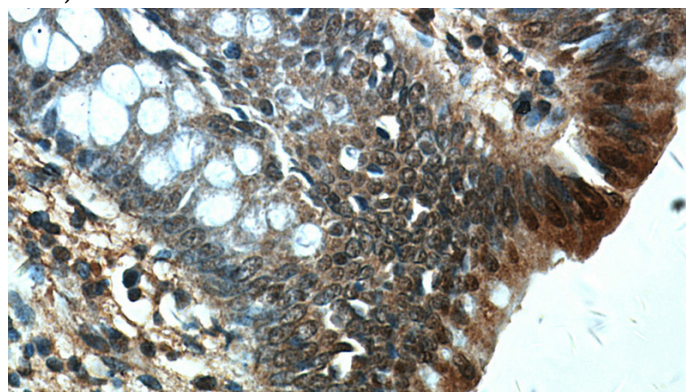
Validations



MCF7 cells were subjected to SDS PAGE followed by western blot with Catalog No:113968(PLK1-phospho antibody) at dilution of 1:200



Immunohistochemical of paraffin-embedded human colon using Catalog No:113968(PLK1-phospho antibody) at dilution of 1:50 (under 10x lens)



Immunohistochemical of paraffin-embedded human colon using Catalog No:113968(PLK1-phospho antibody) at dilution of 1:50 (under 40x lens)