

# PLK1 antibody

Catalog Number: 113967

## Product name

PLK1 antibody

## Specificity

Human, Mouse, Rat; other species not tested.

## Antibody description

PLK1 Rabbit Polyclonal antibody. Positive WB detected in A375 cells, COLO 320 cells, MDA-MB-453s cells. Positive IHC detected in human cervical cancer tissue, human placenta tissue. Observed molecular weight by Western-blot: 62 kDa

## Preparation

This antibody was obtained by immunization of PLK1 recombinant protein (Accession Number: NM\_005030). Purification method: Antigen affinity purified.

## Formulation

PBS with 0.1% sodium azide and 50% glycerol pH 7.3.

## Storage

Store at -20°C. DO NOT ALIQUOT

## Clonality

Polyclonal

## Ig Type

Rabbit IgG

## Applications

ELISA, IHC, WB

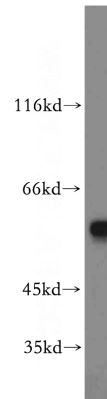
## Dilutions

Recommended Dilution:

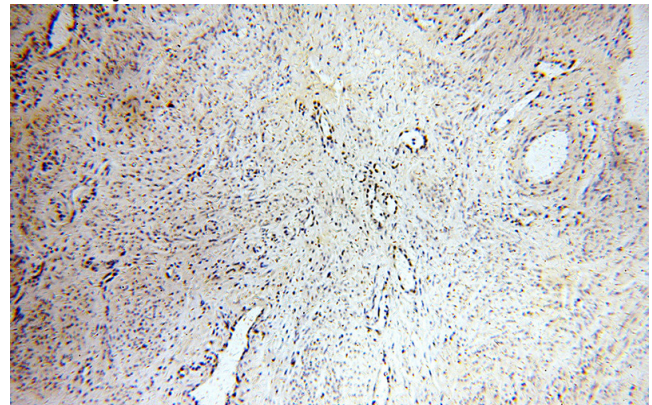
WB: 1:500-1:5000

IHC: 1:20-1:200

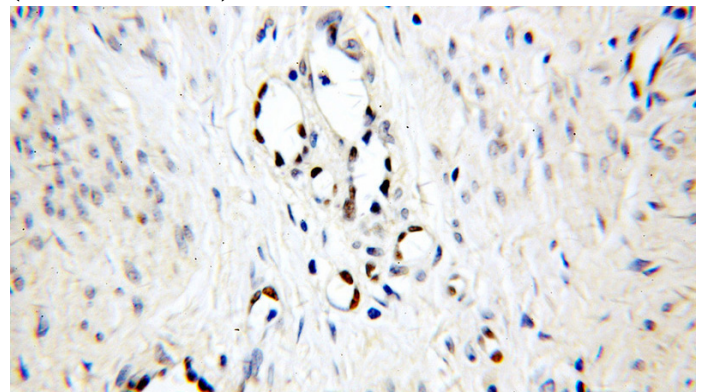
## Validations



A375 cells were subjected to SDS PAGE followed by western blot with Catalog No:113967(PLK1 antibody) at dilution of 1:1000



Immunohistochemical of paraffin-embedded human cervical cancer using Catalog No:113967(PLK1 antibody) at dilution of 1:50 (under 10x lens)



Immunohistochemical of paraffin-embedded human cervical cancer using Catalog No:113967(PLK1 antibody) at dilution of 1:50

# PLK1 antibody



Catalog Number: 113967

---

(under 40x lens)