

# Plasmolipin antibody



Catalog Number: 113943

## Product name

Plasmolipin antibody

## Specificity

Human, Mouse, Rat; other species not tested.

## Antibody description

Plasmolipin Rabbit Polyclonal antibody. Positive WB detected in human testis tissue, human kidney tissue. Observed molecular weight by Western-blot: 18kd

## Preparation

This antibody was obtained by immunization of Plasmolipin recombinant protein (Accession Number: NM\_015993). Purification method: Antigen affinity purified.

## Formulation

PBS with 0.02% sodium azide and 50% glycerol pH 7.3.

## Storage

Store at -20°C. DO NOT ALIQUOT

## Clonality

Polyclonal

## Ig Type

Rabbit IgG

## Applications

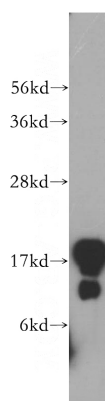
ELISA, WB

## Dilutions

Recommended Dilution:

WB: 1:1000-1:10000

## Validations



human testis tissue were subjected to SDS PAGE followed by western blot with Catalog No:113943(PLLP antibody) at dilution of 1:400